



Workshop: The Impact of Post-2015 Development Agenda on Education Statistics

Ankara – 29th – 30th November 2016

Educational-related Household Surveys, The Gambia

By Lamin Kanteh

The Gambia Bureau of Statistics

Key most recent HH surveys conducted

- Multiple Indicator Cluster Survey (MICS) 2010
- Demographic and Health Survey (DHS) 2013
- Integrated Household Survey (IHS) 2015/2016

MICS 2010

- The series are 1996, 2000, 2005/2006 and 2010
- Collected data on education using six questions.
- Enables the computation of:
 - School attendance (Has never ever attended school?)
 - Educational attainment
 - Literacy (although not comprehensive)
 - School readiness

DHS 2013

- Collected data on education using six questions.
- Enables the computation of:
 - School attendance (Has never ever attended school?)
 - Current and previous year school attendance
 - Limited because collects only for those aged 3-24 years
 - Educational attainment
 - Dropout

IHS 2015/2016

- The most recent and most comprehensive household survey.
 - **But not all-sector exhaustive!!!**
- The largest sample size (13281 hh)
- Data collection over 12 months to capture seasonal change
- Previously conducted every 5 years.
- WB promised to fully support the conduct after 3 years henceforth
- Collects education data from **60** questions on the following modules:
 - General education
 - Household education expenditure
 - Literacy
 - Training

IHS 2015/2016-Contd

- Enables the following computations
 - School attendance (ever)
 - Current school attendance
 - Past school attendance
 - Type of school attended (Conventional and madrassah)
 - Reasons for attending madrassah
 - Reasons for never attended school
 - Highest level of educational attainment (ECD right through PhD)
 - Highest grade completion
 - Ownership/management of school attended (Gov't, Mission, Grant-aided)

IHS 2015/2016-Contd

- Enables the following computations –contd.
 - Previous year school attendance
 - Dropout
 - Retention
 - Distance travelled to school currently attended
 - Mode of transport to school currently being attended
 - Cost of travelling school
 - Interruption experienced by students currently attending school
 - Length of interruption
 - Reasons for interruption

IHS-2015/2016-contd

- Enables the following computations –contd.
 - Household education expenditure for previous school year
 - Party responsible for expenditure
 - Value (if any) of external support to hh education expenditure
 - Literacy for all household members aged 7 years and over
 - Attendance of literacy training for hh members aged 15 years and over
 - Attendance of training course for hh members aged 15 years and over
 - Cost and duration of training
 - Skills learned

Further analysis

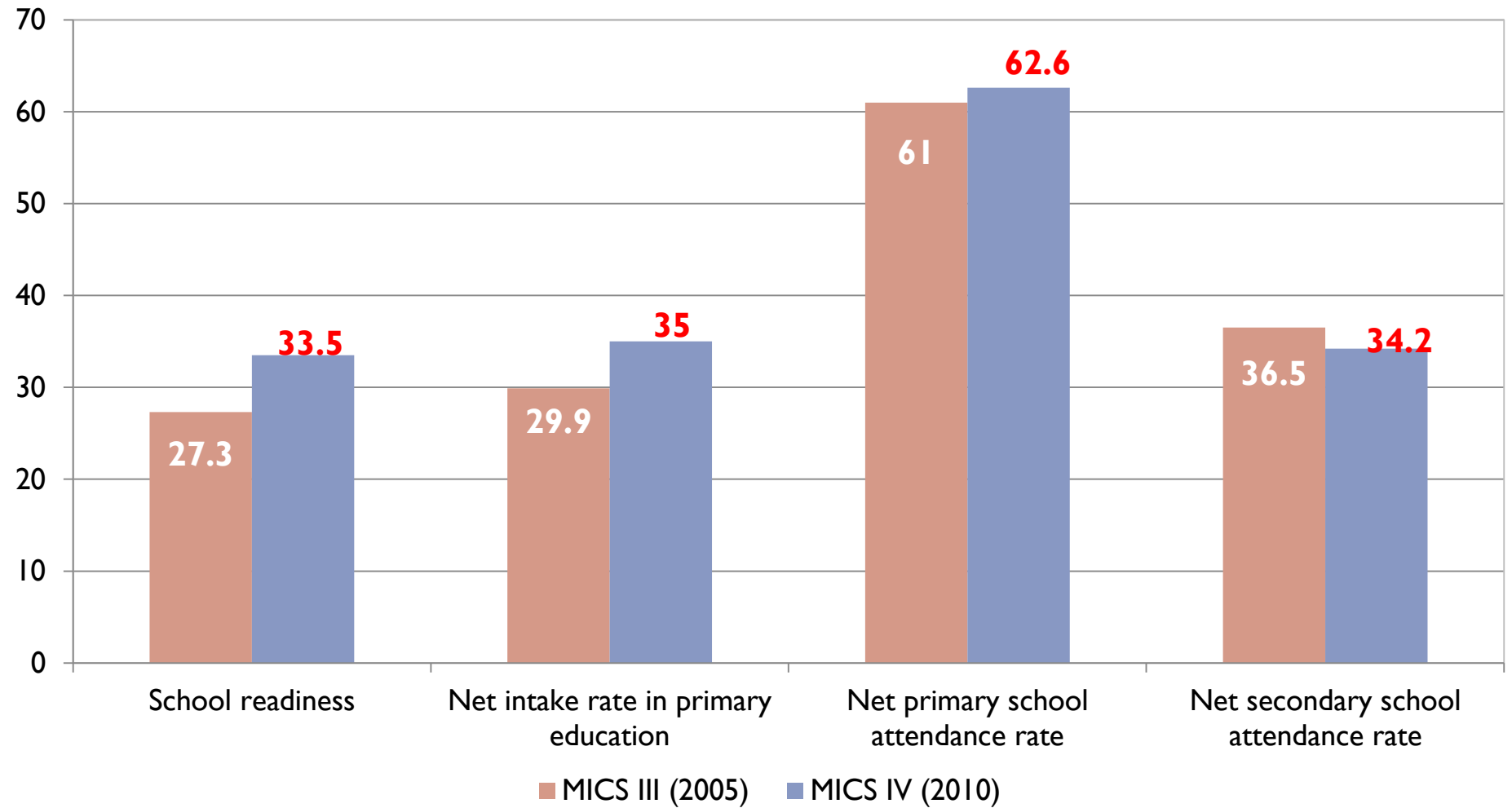
- The IHS data enables further analysis related to education.
- Many other modules included in the questionnaire which a symbiotic relationship with education.

State of the survey

- Data analysis in progress in collaboration with WB
- The first tables are being checked for consistency

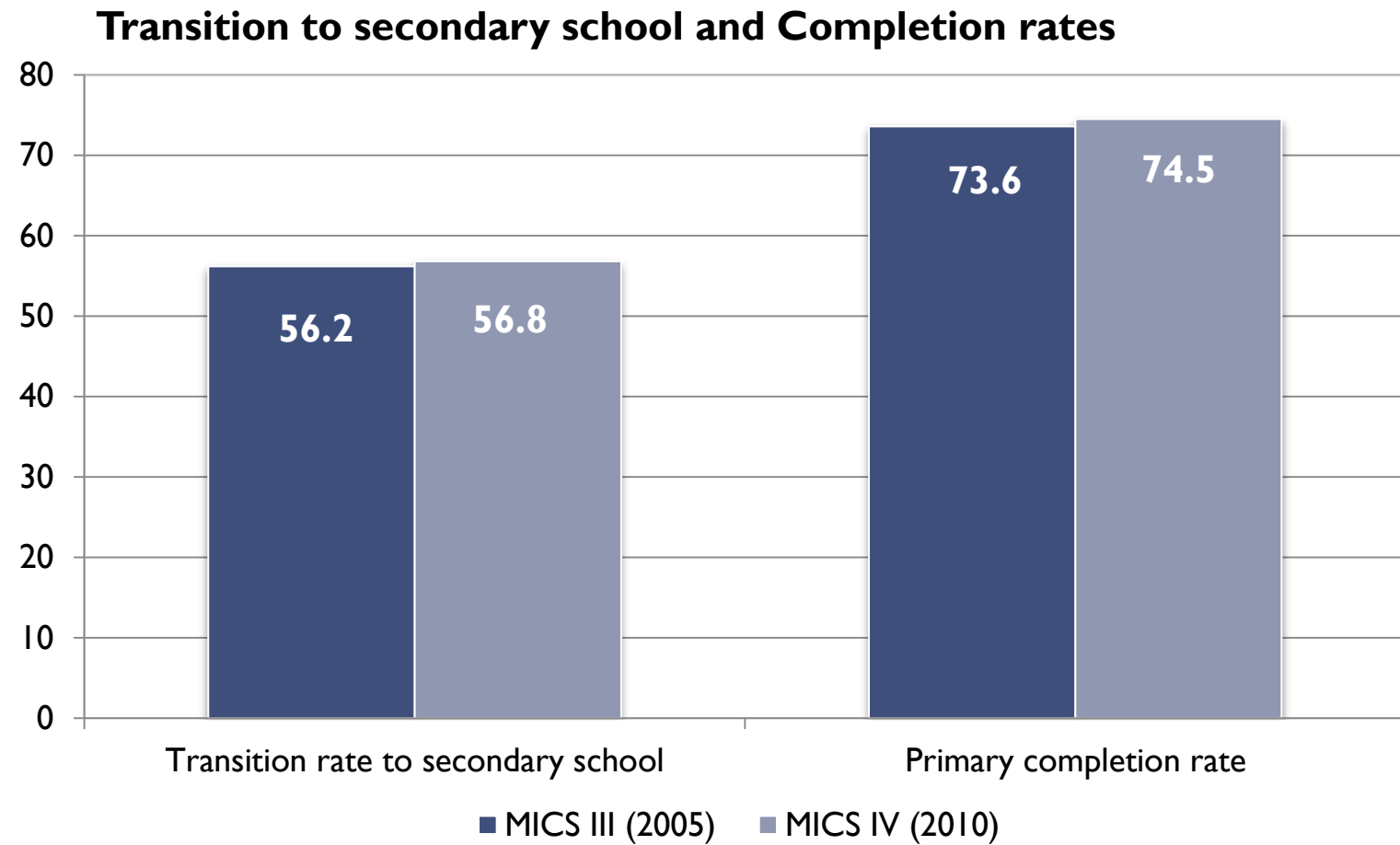
INDICATORS IN HOUSEHOLD SURVEYS

School readiness, Intake rates and Net attendance rates



Source: MICS III, MICS IV

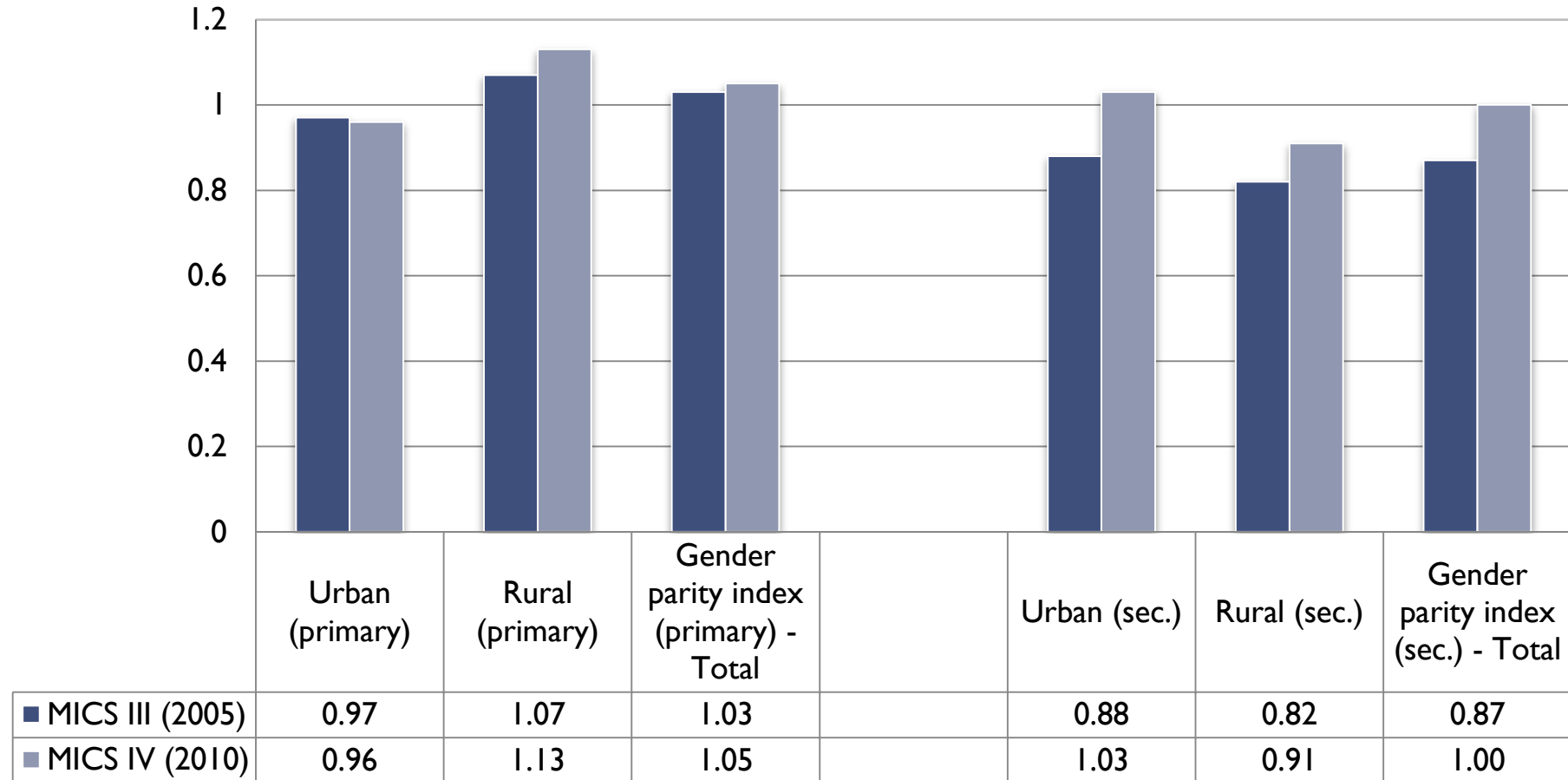
INDICATORS IN HOUSEHOLD SURVEYS contd.



Source: MICS III, MICS IV

INDICATORS IN HOUSEHOLD SURVEYS contd.

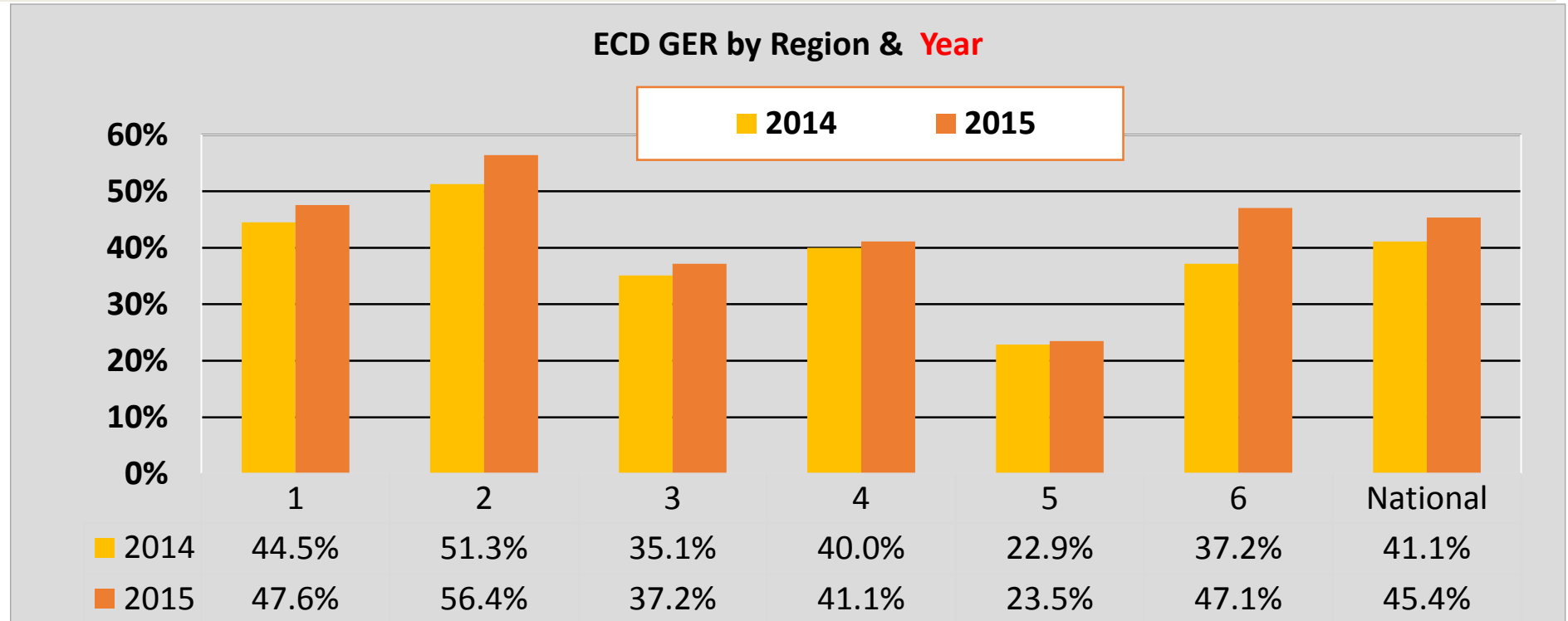
Gender Parity Index



Source: MICS III, MICS IV

ECD, Historical Trend - National Level

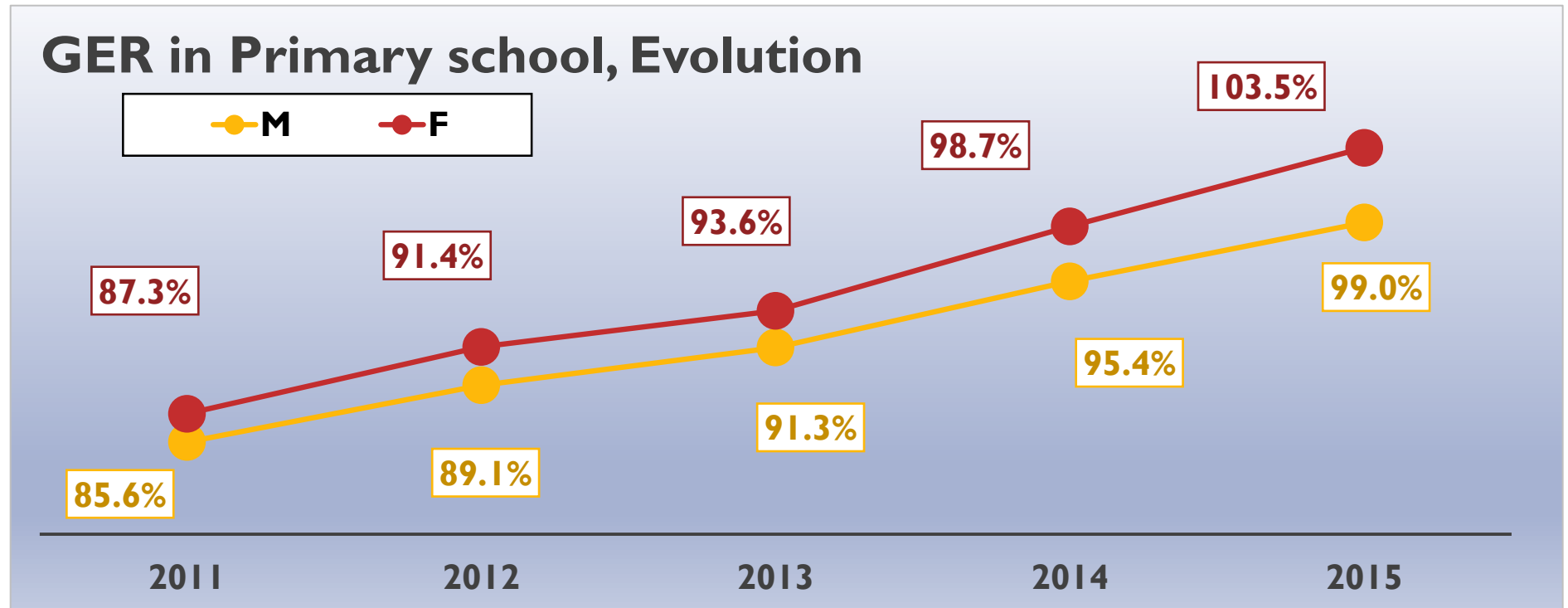
Year	Total ECD Centres	Centres with Perm. Struct.	Classes Total	Participants Boys	Participants Girls	Participants Total	Facilitators Male	Facilitators Female	Facilitators Total	Facilitators Trained
2013	893	469	2,382	37,031	38,881	75,912	1,093	1,162	2,255	1,486
2014	1,015	552	2,647	42,635	44,426	87,061	1,284	1,279	2,563	1,782
2015	1,116	586	3,089	48,176	49,476	97,652	1,496	1,450	2,946	2,054



PRIMARY EDUCATION, Historical Trend - National Level

Year	LBE Schools	Perm. Classrooms	Total Seats	Total Desks	Total Classes	Total Enrolment	Total Girls	Total Repeaters	Total Teachers	Qualified Teachers
2011	682	4,479	107,504	96,891	7,512	228,495	115,523	6,506	4,261	3,208
2012	692	4,789	115,130	114,640	6,571	244,033	123,765	6,403	4,940	3,819
2013	789	5,797	158,129	147,178	7,173	256,912	130,184	8,835	6,868	5,592
2014	861	5,915	152,786	137,400	7,662	274,939	140,069	10,203	7,464	6,278
2015	928	6,380	167,400	150,381	8,203	293,503	150,320	15,543	7,902	6,781

GER in Primary school, Evolution



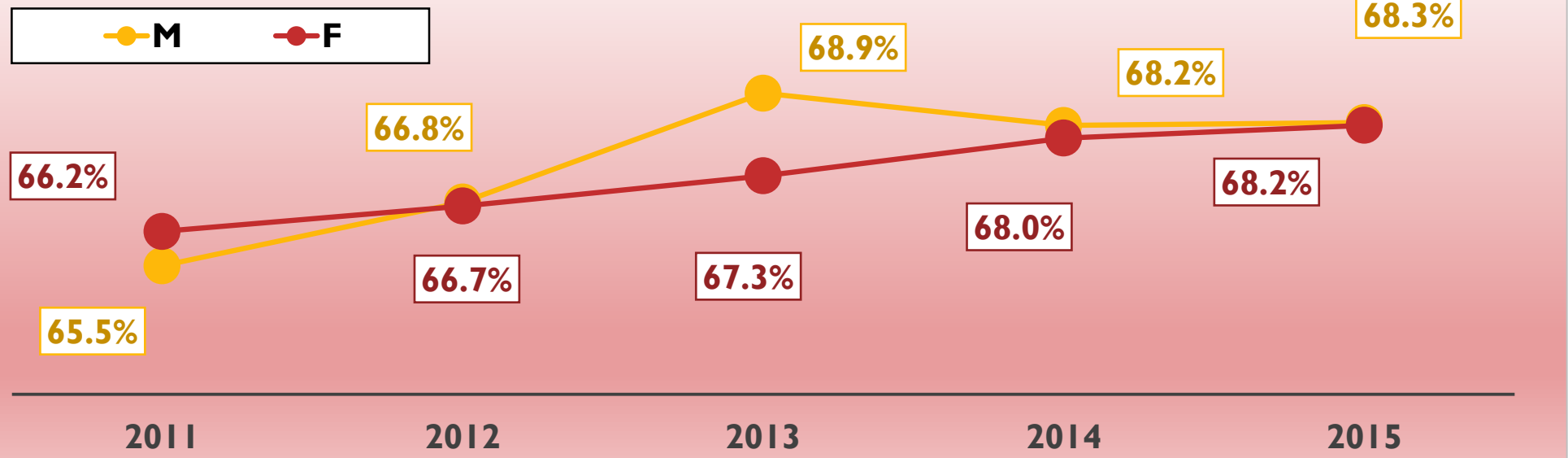
**PRIMARY EDUCATION, HISTORICAL TREND – ENROLMENT RATE
AND COMPLETION RATES – (IN %)**

	Rates	Sex	2015	2016
Gross Enrolment Rate		Male	99.0	101.4
		Female	103.5	106.7
Net Enrolment Rate		Male	79.1	81.4
		Female	84.1	87.8
Completion Rate		Male	72.8	74.7
		Female	74.4	76.0

LOWER SECONDARY EDUCATION BE, Historical Trend -National Level

Year	LSE Schools	Perm. Classrooms	Total Seats	Total Desks	Total Classes	Total Enrolment	Total Girls	Total Repeaters	Total Teachers	Qualified Teachers
2011	252	1,116	37,440	35,476	1,787	77,408	39,370	2,451	1,361	1,244
2012	286	1,387	44,018	42,044	1,923	80,742	40,835	2,186	1,788	1,606
2013	306	1,678	53,028	51,467	1,971	84,825	42,421	2,936	2,873	2,516
2014	325	1,866	56,932	54,221	2,023	87,391	44,146	2,973	3,154	2,853
2015	361	1,970	58,279	55,009	2,155	90,176	45,617	4,082	3,838	3,473

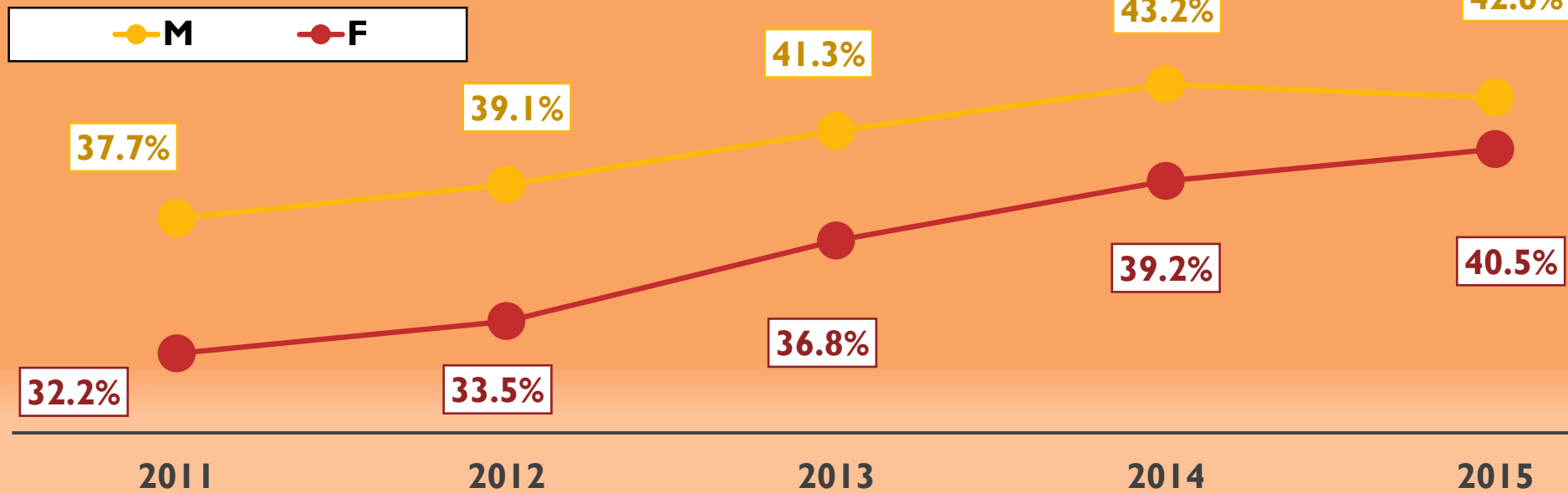
GER in Lower Secondary, Evolution



UPPER SECONDARY EDUCATION, Historical Trend – National Level

Year	USE Schools	Perm. Classrooms	Total Seats	Total Desks	Total Classes	Total Enrolment	Total Girls	Total Repeaters	Total Teachers	Qualified Teachers
2011	100	661	24,428	23,209	780	37,790	17,884	1,689	954	918
2012	100	803	26,549	25,173	876	40,533	19,227	1,192	1,226	1,171
2013	120	1,027	34,039	31,812	1,038	45,041	21,802	1,641	1,590	1,496
2014	134	1,156	38,487	36,602	1,117	49,113	24,006	1,734	1,971	1,844
2015	145	1,182	42,605	39,909	1,228	51,225	25,613	2,495	2,098	1,973

GER in Upper Secondary, Evolution



- 
- **THANKS FOR YOUR KIND ATTENTION**