

DEPARTMENT OF TRAINING EXTENSION AND PUBLICATIONS

Haluk BALIÇ

Department of Training and Extension
Head of the Working Group on Farmers' Training and
Extension Services



REPUBLIC OF TURKEY
MINISTRY OF FOOD AGRICULTURE
AND LIVESTOCK



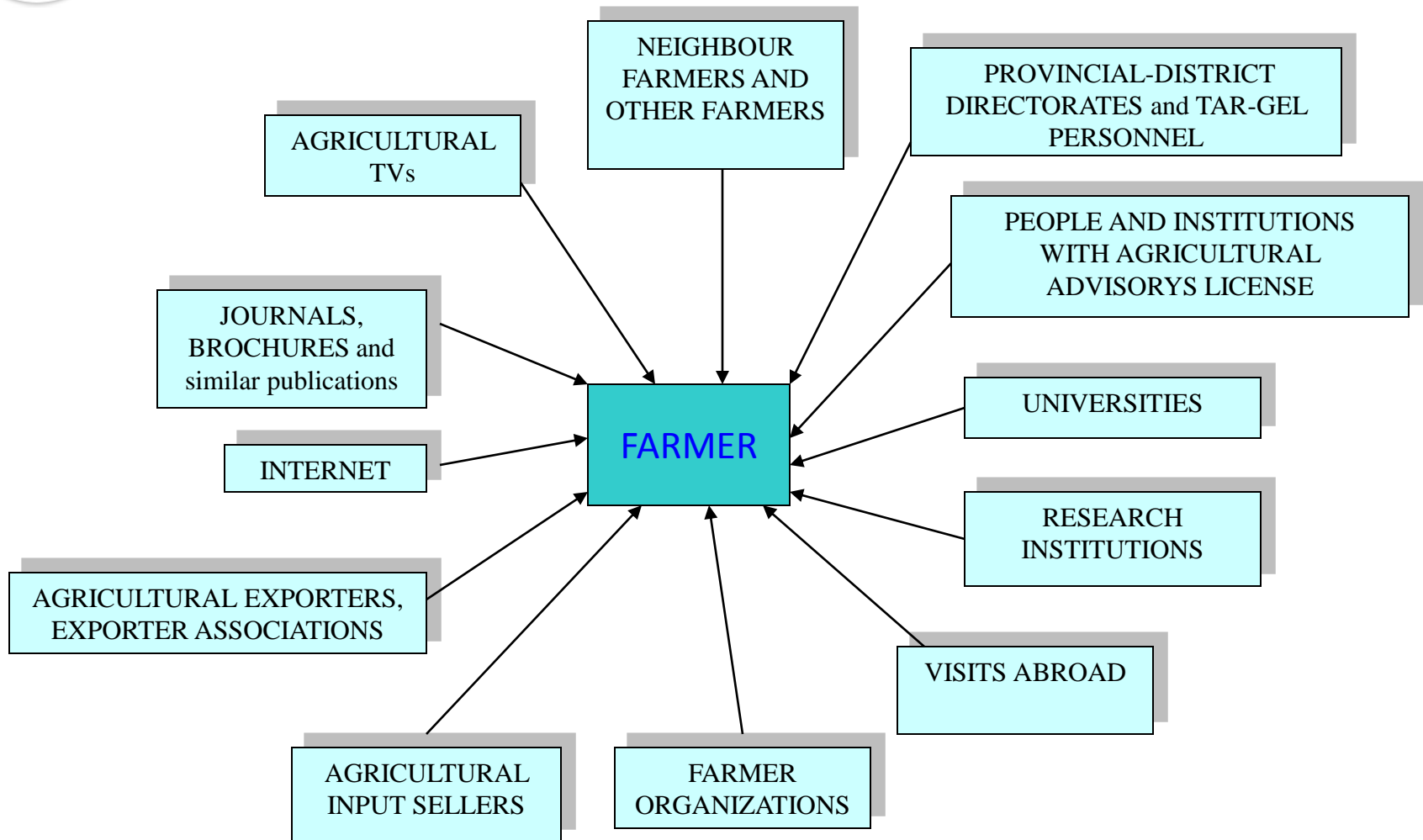
Welcome to



I greet all the participants



INFORMATION RESOURCES OF FARMERS





In our country, agricultural extension is defined as follows.

Agricultural extension is idea of agricultural aid work which aims to provide skills that help to solve the problem faced by farmers.

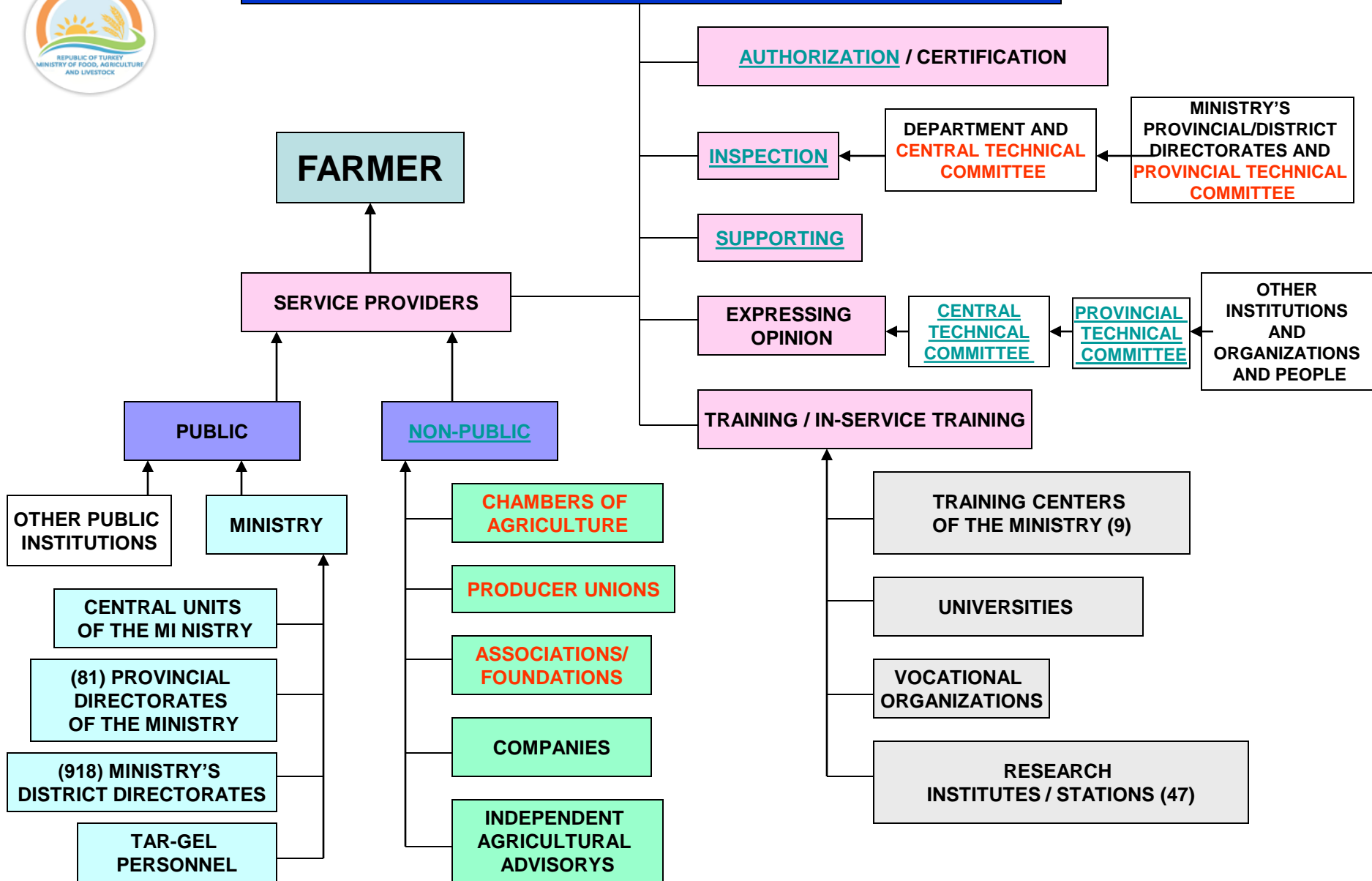
Its base is participatory approach at every stage.



Agricultural Extension and Advisory System of Turkey:

Pluralistic system composed of people and institutions which are defined in the legal legislation and which serve to meet, in due time and sufficiently, the requirements of agricultural facility owners for agricultural knowledge, technics and methods

Agricultural Extension and Advisory System





PUBLIC

Republic of Turkey
MINISTRY OF FOOD, AGRICULTURE AND LIVESTOCK

7 GENERAL DIRECTORATES

(EYYDB)
DEPARTMENT OF TRAINING, EXTENSION AND PUBLICATIONS

DEPARTMENT OF TRAINING AND EXTENSION

Services regarding farmers' training and agricultural extension and advisory,
All kinds of training activities assigned by the Ministry



81 PROVINCIAL DIRECTORATES

AGRICULTURAL EXTENSION SERVICES

Conveying agricultural information and new technologies to the farmers, raising the awareness of consumers, implementing training programs and projects for farmers' children, women and teens

DIVISION OF PLANT PRODUCTION AND PLANT HEALTH

DIVISION OF ANIMAL HEALTH, ANIMAL HUSBANDRY AND FISHERIES

DIVISION OF RURAL DEVELOPMENT AND ORGANIZATION

DIVISION OF FOOD AND FEED

DIVISION OF AGRICULTURAL LAND UTILIZATION

DIVISION OF COORDINATION AND AGRICULTURAL DATA

Problem analysis

Republic of Turkey



Province	81
Town	918
Village	34.353
District	19.103

TAR-GEL



Agricultural Engineer : **5.907**

Veterinary Surgeon : **3.842**

Aquacultural Engineer : **145**

Food Engineer : **85**

Fisheries Technology Engineer : **21**

TOTAL: **10.000**

“ **10.000 Working Regions**” consisting of a central village/district and affiliated residential areas were created.



NON-PUBLIC

Legal legislation on the «Regulation of Agricultural Extension and Advisory Services» entered into force in 2006.

For the certification of people to be involved in agricultural extension and advisory services, a central exam is held in certain dates.

Certificates are given according to the **graduated field.**

Certificates are endorsed in 3 year-period on condition that the owners attend two agricultural trainings.



Chambers of Agriculture 142

Producer Unions 260

Agricultural Associations/Foundations 9

Can render advisory services only for their members and can procure services from companies and independent agricultural advisers.

Service procurement agreement is signed with the company or adviser .

Service agreements last at least 12 months.



Companies 108

at least 3 agricultural advisers and one director,

Companies which

- render services on agricultural advisory for registration certificate of companies,
- do not sell agricultural inputs,
- are not partner of other agricultural advisory companies

Independent agricultural consultants 253

can not render services without a license.

The Department (EYYDB) issues a license.



*** Maximum number of companies to which an agricultural consultant can render service**

Type of Agricultural Facility	Number of Companies	Frequency of Controls
Greenhouse Cultivation	50	Once a week
Horticultural Crops	50	24 times in a year
Farming in the Field (irrigated)	50	15 times in a year
Farming in the Field (non-irrigated)	70	12 times in a year
Cattle Breeding (dairy)	40	Once a week
Cattle Breeding (fattening)	80	24 times in a year
Ovine Animal Breeding	80	24 times in a year
Beekeeping	50	24 times in a year
Fisheries	10	24 times in a year
Mixed *	60	

* For more than one type of facility procuring service from an agricultural consultant



People/companies rendering agricultural advisory services are inspected by the commissions established in the province/district.

Inspections are conducted at least twice a year, in six-month periods.

During inspections, at least 5 % of farmers taking service is interviewed.

In accordance with the report to be prepared after the inspections, provincial technical committee imposes penalty where necessary.

The penalties to be imposed are as follows:

- warning,
- reprimand,
- postponement of license/certificate,
- cancellation of license/certificate.



Supports are given in accordance with the legal legislation published each year.

(500 TL = 277 \$) to the farmers who procured agricultural advisory services between 2009 and 2011.

(600 TL = 333 \$) to the people/companies which rendered agricultural advisory services in 2012.

Agricultural facilities under the scope of supporting should be registered in the registration system of the Ministry with respect to the production area, and should satisfy one of the following conditions:

Making production in 3 da for protected cultivation,

in 10 da for vineyard and garden,

in 100 da for non-irrigated field, and in 50 da for irrigated field,

Making animal husbandry with at least 20 cattle, 10 of which are raised for dairy purposes, in the facilities raising dairy cattle, and with at least 50 cattle in the facilities dealing with fattening,

Having at least 100 ovine animals for sheep and goat raising,

Having at least 50 colonies for beekeeping,

Owning a production facility for fisheries



PROVINCIAL TECHNICAL COMMITTEE

Consists of the Provincial Director, units of the provincial directorate, research institutes, university, non-governmental organizations and representatives of vocational organizations.

- Conducting studies for increasing the quality and efficiency of agricultural extension and advisory services in the province,
- Taking measures for preventing the suffering of producers and unfair competition,
- Submitting proposals to the people and companies rendering agricultural advisory services,
- Imposing penalties against the people or companies rendering agricultural advisory services.

CENTRAL TECHNICAL COMMITTEE

Consists of the Ministerial Units, University, Non-governmental organizations and the representatives of vocational organizations.

- Developing strategy/policy,
- Expressing opinions and submitting proposals,
- Assessing the decisions of provincial technical committee,
- Concluding the objections against the penalties imposed by the provincial technical committees by establishing a disciplinary board (consisting of 5 people),
- Determining the maximum number of facilities.



Agricultural innovation and information system

