

# The Indonesian Population Census 2010 : Challenges and innovations

Teguh Pramono, MA  
*BPS – STATISTICS - INDONESIA*

# Indonesian regional diversity



33 Provinces; 497 Districts/Municipalities; 6,651 Sub-districts; 77,126 Villages;  
842,850 Census Blocks; 17,504 islands ( $\pm$  13,000 inhabited)  
+ 360 Ethnic groups; + 250 Local languages

The diversity is also happening in regional demographic indicators

# ADMINISTRATIVE AREA

NO	ISLAND	PROVINCE	REGENCY/ MUNICIPALITY	KECAMATAN	VILLAGES
1	SUMATRA	10	151	1.794	23.979
2	JAWA	6	118	2.136	25.202
3	NUSA TENGGARA	3	40	460	4.517
4	KALIMANTAN	4	55	587	6.821
5	SULAWESI	6	73	950	9.710
6	MALUKU & PAPUA	4	60	724	6.897
	TOTAL	33	497	6.651	77.126

# Facts and Geography challenges



- From the skyscraper to the shelter.
- From the top of the mountain to the surface of the sea.



- Bajo people in Sulawesi live in the boat moves depending on the wind season.



# Censuses in Indonesia

- Two censuses during Dutch Administration: in 1920 & 1930.
- Five censuses after the independence (1945): in 1961, 1971, 1980, 1990 and 2000.
- The 2010 census is the eight census.

## Quest 2010

**REPUBLIK INDONESIA**  
**SENSUS PENDUDUK 2010**  
PENDAFTARAN BANGSA DAN RUMAH TANGGA

**I. PENDAHULUAN**

**II. IDENTIFIKASI**

**III. KETERANGAN RUMAH TANGGA**

**IV. KETERANGAN PENDUDUK**

## Quest 2000

**REPUBLIK INDONESIA**  
**SENSUS PENDUDUK 2000**  
MODUL KEPENDUDUKAN

**I. PENDAHULUAN**

**II. KETERANGAN RUMAH TANGGA**

**III. KETERANGAN PENDUDUK**

## Quest 1990

**REPUBLIK INDONESIA**  
**SENSUS PENDUDUK 1990**  
PENDUDUK SAMPEL

**I. PENDAHULUAN**

**II. KETERANGAN RUMAH TANGGA**

**III. KETERANGAN PENDUDUK**

## Quest 1971

**REPUBLIK INDONESIA**  
**SENSUS PENDUDUK 1971**  
PENDUDUK SAMPEL

**I. PENDAHULUAN**

**II. KETERANGAN RUMAH TANGGA**

**III. KETERANGAN PENDUDUK**

## Quest 1961

**REPUBLIK INDONESIA**  
**SENSUS PENDUDUK 1961**  
PENDUDUK SAMPEL

**I. PENDAHULUAN**

**II. KETERANGAN RUMAH TANGGA**

**III. KETERANGAN PENDUDUK**

## Mappings



- Mapping region is to ensure all households are covered and the borders between two areas do not cross over.



## Mappings



- **Citra Maps**  
Citra maps are used as support material mapmaking WA and WB. The mapmaking of Citra map has been started since the year 2008 from the beginning stages of preparation
- **Global Positioning Sistem (GPS)**  
To get the exact location and precise position's map, SP2010 also uses GPS technology to maximize the quality of the map for the census implementation of the future

# TRAINING



• SUBJECT MATTER

• CHIEF INSTRUCTOR

• NATIONAL INSTRUCTOR

• REGIONAL INSTRUCTOR

• ENUMERATORS



# Training of enumerators in Papua



- \* Enumerators & team leader
  - \* Vast effort to find adequately educated enumerator
  - \* Difficulty in constructing team
  - \* Facilities for training are varies.

# Multichannel campaign:

- \* TV Spot (Public Service Announcements) TV blocking time Talkshow and interactive dialog and Radio Spot during the prime time program, 40 days broadcast.
- \* Printed media campaign in the most popular magazine and news paper.
- \* Special booklet for informal leaders to involve in the campaign.
- \* Banner for the whole villages (tens of banners, billboards, banner special car stickers, etc. were installed in each and every village in Indonesia.
- \* Plastic bags with the logo and slogan of 2010 Population Census were distributed to customers in several traditional and modern markets.

# Campaign

# Preparation

- Campaign meeting
- Campaign Media
- On Spot Media
- On road Media (stiker on the car spread to the city)
- Various Souvenir for a variety of different purposes (caledar, mug, t-shirt ect.)
- Public Service Ads
- Tea Walk (employee mobilization)
- Public Expose
- Campaign to market, Mall, School, Public figures
- Bung Itung (mascot) in action
- Census Expose
- Campaign in mass Media
- Built program on TV
- Talkshow
- Print Media
- Internet (Social Media ; Facebook, twiiter)



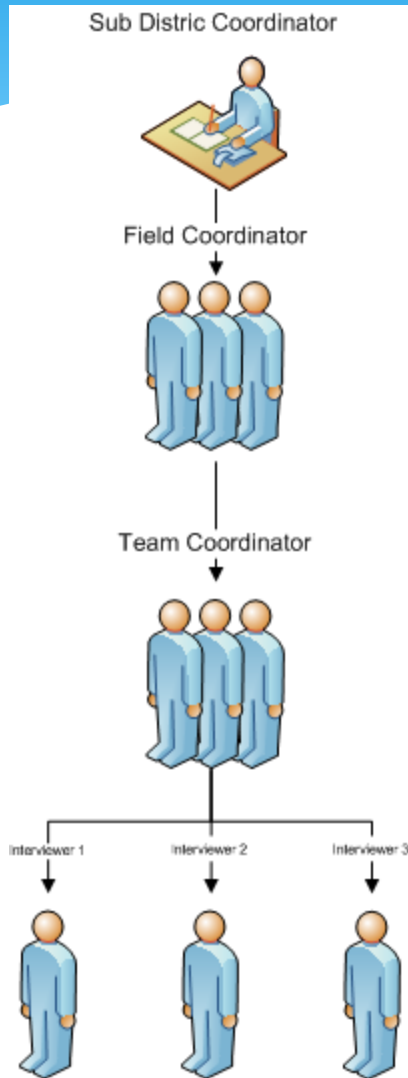
# CAMPAIGN EFFECTS

- \* The family of President was the first to be enumerated,
- \* Throughout Indonesia, most people waited for the enumerators to come to their house and enumerate them





# Field Organization of 2010 Census



- \* Sub district coordinator (SC) handled **all** field coordinator.
- \* Field coordinator (FC) handled 10 team.
- \* Team coordinator (TC) handled 3 interviewers.
- \* Team covered 3 to 9 census block.
- \* 1 census block  $\pm$  80 - 120 households
  
- \* Total people in the field :
  - \*  $6.651 \text{ SC} + 11.238 \text{ FC} + 112.380 \text{ TC} + 337.140 \text{ Intrv}$
  - \*  $= 467.409 \text{ people}$
  - \* 232.000 as the instructurs (700.000 people)
  
- \* The processes of data collection were monitored and supervised by 1.600 independent quality assurance team.



# Data collection method

- \* Enumeration period: May 2010; census date 15 May
- \* 2-stage enumeration was employed:
  - \* 1<sup>st</sup> stage: listing procedure: name of HH heads, number of HH members by sex was listed by enumerator to every HHs in all CBs
  - \* 2<sup>nd</sup> stage: every HH enumerated using Long form Q'naire (43 vars)
- \* Long form Questionnaire:
  - \* Individual level data: demographic, education, health, employment, fertility, mortality, migration, ethnicity/race, language
  - \* Household level data: housing: ownership, physical quality, utility
- \* Data collection for non-permanent residential people: homeless, boat-people, sailors,
- \* Quick count was done to recap people from census blocks up to village, sub district, district, province to be announced by August 2010

# 2010 Census Questionnaires

- \* Three kinds of questionnaires were used to enumerate the population in the 2010 PC:
- \* **C1** – 42 questions, used for people living in households in areas covered by the census mapping;
- \* **C2** – 14 questions, used for people living in areas which were not included in the mapping, such as remote/ isolated areas, Indonesian diplomats living abroad, etc.; and
- \* **L2** – 2 questions (number and sex), used for the homeless, people living on boats, crews of Indonesian ships, and isolated tribal population.

The image shows a sample of the 2010 Indonesian Census questionnaire (SP2010-C1). The form is titled "RAHASIA" (Secret) and "REPUBLIC INDONESIA SENSUS PENDUDUK 2010" (2010 Population Census). It includes instructions for using the questionnaire, a grid for recording responses, and various sections for demographic and household information.

**RAHASIA** REPUBLIK INDONESIA  
**SENSUS PENDUDUK 2010**  
 PENGACAHAN LENGKAP RUMAH TANGGA DAN PENDUDUK

SP2010-C1

**Perhatian:**  
 • Gunakan pensil 2B cap BPS SP2010 untuk mengisi jawaban.  
 • Hapus sampai bersih jika ingin mengubah jawaban.  
 • Jaga dibukurnya agar tetap bersih, kering, serta tidak boleh terlipat.

Set  dari  lembar  
 SP2010-C1(LP)

**COTONG PENUNJUAN ANOKA, MARKING, DAN HURUF YANG BENAR:**

PERSEKUTUAN ANOKA: 1 2 3 4 5 6 7 8 9 0 MARKING: A B C D E F G H I J K L M N O P Q R S T U V W X Y Z PERSEKUTUAN HURUF

**I. PENGENALAN TEMPAT**

Prov Kab/Kota Kecamatan Desa/Kel No Blok Sensus No Urut SLS No Bangunan Fisik No Bangunan Sensus No Urut Rumah Tangga

ALAMAT :

Rumah tangga adalah sekelompok orang yang biasanya tinggal bersama dalam suatu bangunan serta pengelolaan maknanya dari satu dapur. Satu rumah tangga dapat terdiri dari hanya satu anggota rumah tangga.  
 • Tampilkan tidak saja yang biasa tinggal dan makan di rumah tangga ini, baik dewasa, anak-anak, bayi, atau orang yang sedang bepergian (kurang dari 6 bulan) tapi tidak termasuk pindah.  
 • Tuliskan nomor dan nama seluruh anggota rumah tangga pada daftar di bawah ini dimulai dari kepala rumah tangga.

No	SUSUNAN ANGGOTA RUMAH TANGGA	Hubungan dengan Kepala rumah tangga	Jenis kelamin (dari tanda "✓" pada kolom yang sesuai)
(1)	(2)	(3)	(4) (5)
001		✓	I

Nomor urut ART pemberi keterangan utama  Jumlah   
 Jumlah ART

\*Kode hubungan dengan kepala rumah tangga (Kolom 3):  
 1. Kepala rumah tangga 2. Istri/ suami 3. Anak kandung 4. Anak adopsi/ 5. Manantu  
 6. Cucu 7. Orang buaya/mertua 8. Family lain 9. Pembantu/sopir/petugas kebun 0. Lainnya

**TERMASUK ANGGOTA RUMAH TANGGA (tambahkan dalam daftar)**

1. Apakah ada bayi atau anak kecil yang belum terdaftar?  
 2. Apakah ada orang lain yang mungkin bukan keluarga seperti pembantu rumah tangga atau orang yang menginap atau teman, biasa tinggal di rumah tangga ini tetapi belum terdaftar?  
 3. Apakah ada tamu di rumah tangga ini yang sudah meninggalkan rumahnya 6 bulan atau lebih?  
 4. Apakah ada orang yang biasa tinggal di rumah tangga ini dan sedang bepergian pulang dari 6 bulan?

**DIANGGAP BUKAN ANGGOTA RUMAH TANGGA (coret dari daftar)**

1. Apakah ada orang yang sudah tercatat tetapi sedang bepergian selama 6 bulan atau lebih?  
 2. Apakah ada orang yang sudah tercatat tetapi sudah pergi dan belum kembali?  
 3. Apakah ada orang yang masih tercatat tetapi sudah meninggal?  
 4. Apakah ada anak yang sudah tercatat tetapi berkemah/koncom dan tinggal di tempat lain (misal: kos)?

**PEMERIKSAAN KORTIM**  
 Isi tanda (✓) jika sudah diperiksa

1. Apakah penulisan angka, marking, dan huruf sudah benar dan jelas?  
 2. Apakah pengisian tempat susun terisi dengan benar dan jelas?  
 3. Apakah isian untuk P201-P208 untuk seluruh anggota rumah tangga sudah terisi?  
 4. Apakah umur P204 untuk seluruh anggota rumah tangga sudah terisi?  
 5. Apakah seluruh anggota rumah tangga terisi dengan benar dan jelas?

NAMA PENGACAH   
 KODE PENGACAH

# Variables Covered

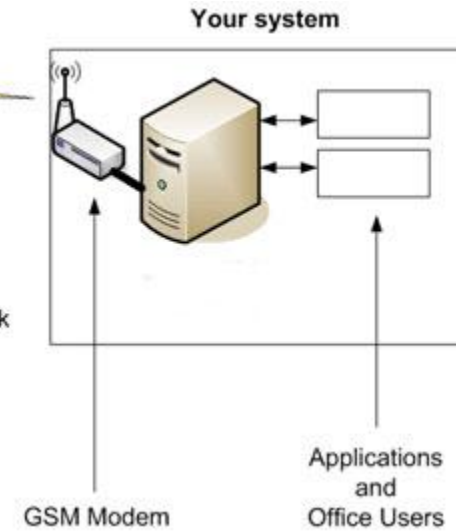
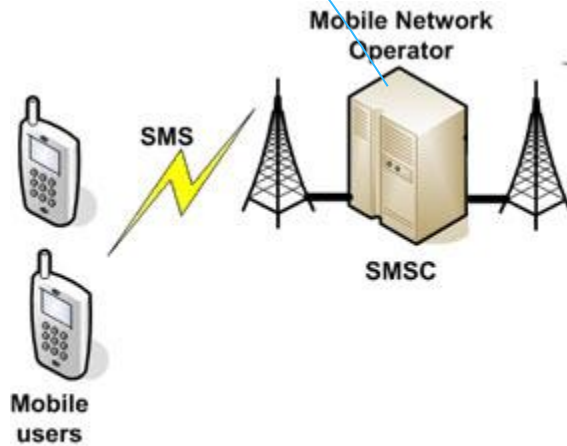
Items	2000 Census	2010 Census
<b>Major Questionnaire:</b>		
1 No. of variables	15 variables	42 variables
2 No. of pages	2 pages	8 pages
<b>Supporting data processing facilities</b>		
1 No. of Scanner	79	54
2 No. of Guillotine	-	38
<b>Map-base</b>	Conventional	Satellite image

# Data Processing

## SMS Gateway



ISP



Enumerator

SMS Gateway

# Sending data using SMS

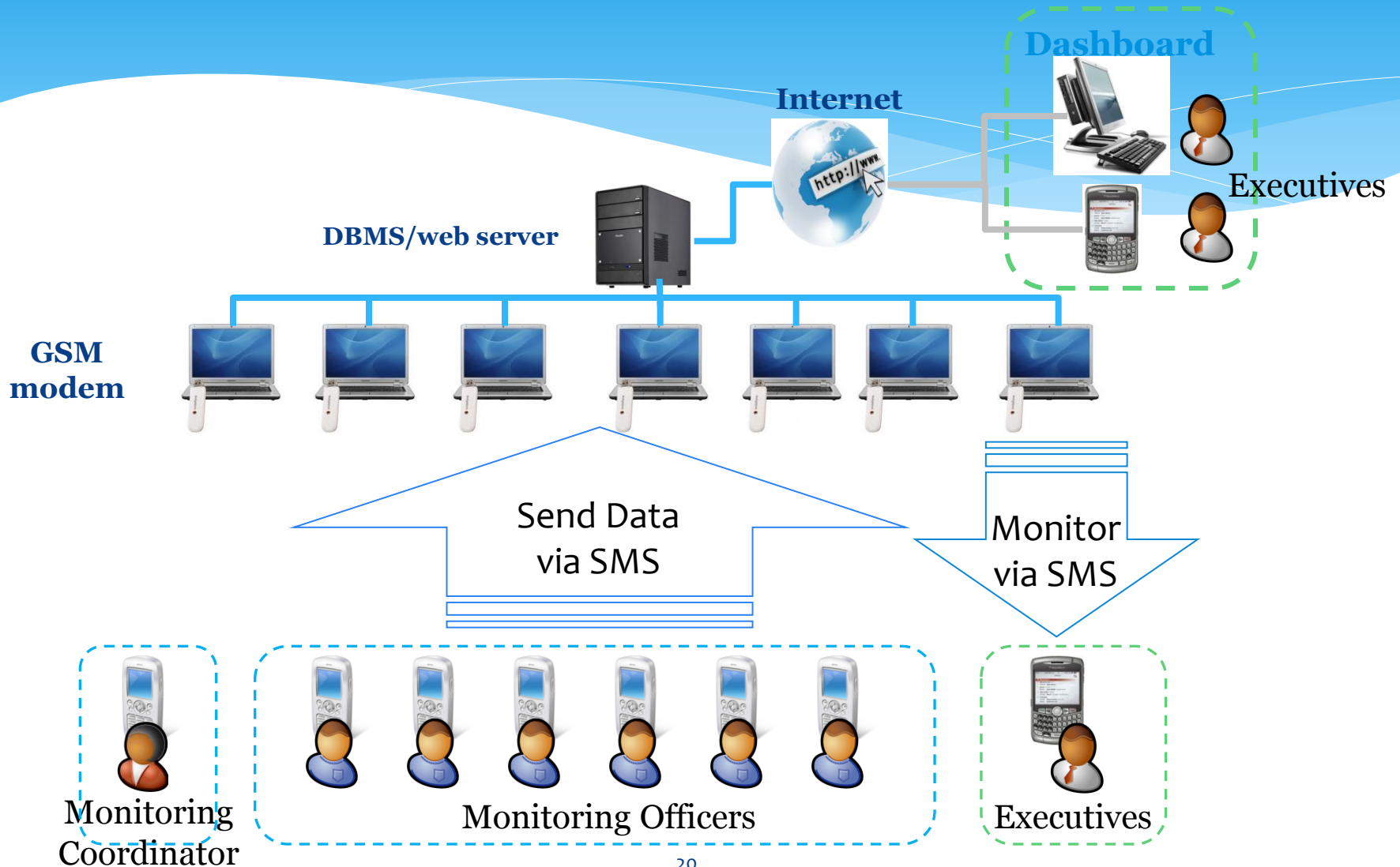
- \* After one enumerator finish listing with one cluster the Team Coordinator will send the summary result to the call center using SMS (Short Message System).
- \* The resume encompasses:
  - \* cluster identity,
  - \* number of male, and
  - \* number of female



# Fields problems

- \* Area to monitor
- \* Geographical – mountain, coastal,
- \* Climate, high rainfall
- \* Distances between houses in rural area
- \* Condominium, luxurius appartement, high rank, popular
- \* Urban & Rural
- \* Team coordination

# Mobile System Architecture



## MONITORING LISTING (L1) MELALUI SMS

Masukan dari SMS

Perbedaan SMS - RBL1

SP1990, SP2000, SMS, RBL1

No. HP

PIN

Masuk

[Tutup Grafik]

Indonesia

Indonesia	Propinsi	%BS	%L1	%C1
00.	INDONESIA	100.0	95.4	59.4
▶	11. Nanggroe Aceh Darussalam (23)	100.0	91.9	97.4
▶	12. Sumatera Utara (33)	100.2	97.4	88.0
▶	13. Sumatera Barat (19)	100.0	98.4	11.0
▶	14. Riau (12)	100.0	99.1	20.0
▶	15. Jambi (11)	100.0	95.7	89.6
▶	16. Sumatera Selatan (15)	100.0	95.4	23.2
▶	17. Bengkulu (10)	100.0	98.1	97.4
▶	18. Lampung (14)	100.0	98.0	76.0
▶	19. Kepulauan Bangka Belitung (7)	100.0	103.3	100.6
▶	21. Kepulauan Riau (7)	100.0	100.6	45.4
▶	31. Dki Jakarta (6)	100.0	101.0	9.7
▶	32. Jawa Barat (26)	100.0	96.2	43.9
▶	33. Jawa Tengah (35)	100.0	92.2	95.5
▶	34. D I Yogyakarta (5)	100.0	104.5	101.8
▶	35. Jawa Timur (38)	100.0	93.5	45.2
▶	36. Banten (8)	100.0	99.3	97.6
▶	51. Bali (9)	100.0	101.7	101.3
▶	52. Nusa Tenggara Barat (10)	100.0	92.5	45.6
▶	53. Nusa Tenggara Timur (21)	100.0	93.0	30.2
▶	61. Kalimantan Barat (14)	100.0	93.0	18.2
▶	62. Kalimantan Tengah (14)	100.0	88.8	18.8
▶	63. Kalimantan Selatan (13)	100.0	98.6	100.1
▶	64. Kalimantan Timur (14)	100.0	96.4	61.2
▶	71. Sulawesi Utara (15)	100.0	88.4	59.6
▶	72. Sulawesi Tengah (11)	100.0	96.9	100.4

Fill in mobile phone number and PIN

## MONITORING LISTING (L1) MELALUI SMS


[0852 6443 2010](#)
[0852 6465 2010](#)
[0857 6127 2010](#)
[0819 9080 2010](#)
[0838 9100 2010](#)

**Mobile Call Center==>0812 8107 0701-05**

[Masukan dari SMS](#)
[Perbedaan SMS - RBL1](#)
[SP1990, SP2000, SMS, RBL1](#)



[\[Tutup Grafik\]](#)
[Indonesia](#)

Indonesia/Propinsi	Blok Sensus (BS)			Rumahtangga					Penduduk			Rata2 ART	Sex Ratio
	Hasil Peme-taan	Hasil Listing	%	Jml KK Hasil Rekap Desa	Ruta Hasil Listing	%	C1	%	Laki-laki	Perempuan	Total		
00. INDONESIA	842,851	843,040	100.0	64,145,610	61,206,274	95.4	36,386,147	59.4	118,556,848	117,642,490	236,199,338	3.9	101
▶ 11. Nanggroe Aceh Darussalam (23)	16,118	16,118	100.0	1,158,845	1,065,091	91.9	1,037,502	97.4	2,224,849	2,229,998	4,454,847	4.2	100
▶ 12. Sumatera Utara (33)	40,224	40,302	100.2	3,123,952	3,043,784	97.4	2,679,404	88.0	6,439,353	6,477,648	12,917,001	4.2	99
▶ 13. Sumatera Barat (19)	15,182	15,182	100.0	1,171,669	1,153,405	98.4	127,056	11.0	2,398,160	2,441,392	4,839,552	4.2	98
▶ 14. Riau (12)	18,954	18,954	100.0	1,345,736	1,334,195	99.1	267,207	20.0	2,836,237	2,677,156	5,513,393	4.1	106
▶ 15. Jambi (11)	11,404	11,404	100.0	799,017	764,438	95.7	684,965	89.6	1,550,228	1,493,477	3,043,705	4.0	104
▶ 16. Sumatera Selatan (15)	26,433	26,433	100.0	1,900,340	1,813,419	95.4	420,314	23.2	3,753,315	3,645,426	7,398,741	4.1	103
▶ 17. Bengkulu (10)	6,586	6,586	100.0	444,286	435,699	98.1	424,559	97.4	870,625	842,687	1,713,312	3.9	103
▶ 18. Lampung (14)	27,871	27,871	100.0	1,964,600	1,924,669	98.0	1,462,460	76.0	3,866,293	3,676,917	7,543,210	3.9	105
▶ 19. Kepulauan Bangka Belitung (7)	4,093	4,093	100.0	302,870	312,807	103.3	314,823	100.6	632,065	586,419	1,218,484	3.9	108
▶ 21. Kepulauan Riau (7)	5,955	5,955	100.0	441,077	443,861	100.6	201,521	45.4	861,226	818,573	1,679,799	3.8	105
▶ 31. Dki Jakarta (6)	31,748	31,748	100.0	2,529,345	2,554,252	101.0	247,603	9.7	4,906,729	4,753,546	9,660,275	3.8	103
▶ 32. Jawa Barat (26)	147,158	147,229	100.0	11,988,189	11,535,095	96.2	5,066,441	43.9	21,773,109	21,091,975	42,865,084	3.7	103
▶ 33. Jawa Tengah (35)	116,534	116,534	100.0	9,435,282	8,696,381	92.2	8,305,346	95.5	16,010,475	16,302,818	32,313,293	3.7	98
▶ 34. D I Yogyakarta (5)	12,016	12,019	100.0	990,202	1,035,142	104.5	1,054,053	101.8	1,703,465	1,746,109	3,449,574	3.3	98
▶ 35. Jawa Timur (38)	146,184	146,210	100.0	11,112,452	10,392,581	93.5	4,701,297	45.2	18,278,929	18,871,341	37,150,270	3.6	97

## MONITORING LISTING (L1) MELALUI SMS


[0852 6443 2010](#)
[0852 6465 2010](#)
[0857 6127 2010](#)
[0819 9080 2010](#)
[0838 9100 2010](#)

**Mobile Call Center==>0812 8107 0701-05**

[Masukan dari SMS](#)
[Perbedaan SMS - RBL1](#)
[SP1990, SP2000, SMS, RBL1](#)




Click row for detail province (17)

[Indonesia](#)

Indonesia/Propinsi	Blok Sensus (BS)			Rumah tangga			Penduduk			Rata2 ART	Sex Ratio
	Hasil Peme taan	Hasil Listing	%	Jml KK Hasil Rekap Desa	Ruta Hasil Listing	%	Laki-laki	Perempuan	Total		
00. INDONESIA	842,851	843,040	100.0	64,145,610	61,206,274	95.4	36,307,597	27,598,449	63,906,046	3.9	101
▶ 11. Nanggroe Aceh Darussalam (23)	16,118	16,118	100.0	1,158,845	1,065,091	91.9	1,002,002	1,002,002	2,004,004	4.2	100
▶ 12. Sumatera Utara (33)	40,224	40,302	100.2	3,123,952	3,043,784	97.4	2,604,004	2,604,004	5,208,008	4.2	99
▶ 13. Sumatera Barat (19)	15,182	15,182	100.0	1,171,669	1,153,405	98.4	1,056,000	1,056,000	2,112,000	4.2	98
▶ 14. Riau (12)	18,954	18,954	100.0	1,345,736	1,334,195	99.1	2,207,000	2,207,000	4,414,000	4.1	106
▶ 15. Jambi (11)	11,404	11,404	100.0	799,017	764,438	95.7	694,965	694,965	1,389,930	4.0	104
▶ 16. Sumatera Selatan (15)	26,433	26,433	100.0	1,900,340	1,813,419	95.4	4,031,000	4,031,000	8,062,000	4.1	103
▶ 17. Bengkulu (10)	6,586	6,586	100.0	444,286	435,699	98.1	424,559	424,559	849,118	3.9	103
▶ 18. Lampung (14)	27,871	27,871	100.0	1,964,600	1,924,669	98.0	1,462,460	1,462,460	2,924,920	3.9	105
▶ 19. Kepulauan Bangka Belitung (7)	4,093	4,093	100.0	302,870	312,807	103.3	314,823	314,823	629,646	3.9	108
▶ 21. Kepulauan Riau (7)	5,955	5,955	100.0	441,077	443,861	100.6	201,521	201,521	403,042	3.8	105
▶ 31. Dki Jakarta (6)	31,748	31,748	100.0	2,529,345	2,554,252	101.0	247,603	247,603	495,206	3.8	103
▶ 32. Jawa Barat (26)	147,158	147,229	100.0	11,988,189	11,535,095	96.2	5,066,441	5,066,441	10,132,882	3.7	103
▶ 33. Jawa Tengah (35)	116,534	116,534	100.0	9,435,282	8,696,381	92.2	8,305,346	8,305,346	16,610,692	3.7	98
▶ 34. D I Yogyakarta (5)	12,016	12,019	100.0	990,202	1,035,142	104.5	1,054,053	1,054,053	2,108,106	3.3	98
▶ 35. Jawa Timur (38)	146,184	146,210	100.0	11,112,452	10,392,581	93.5	4,701,297	4,701,297	9,402,594	3.6	97



## MONITORING LISTING (L1) MELALUI SMS


[0852 6443 2010](#)
[0852 6465 2010](#)
[0857 6127 2010](#)
[0819 9080 2010](#)
[0838 9100 2010](#)

**Mobile Call Center==>0812 8107 0701-05**

[Masukan dari SMS](#)
[Perbedaan SMS - RBL1](#)
[SP1990, SP2000, SMS, RBL1](#)

Sdr. Hermawan Agustina

[Keluar](#)
[xls](#)

Click row for detail village (003)

[\[Tutup Grafik\]](#)
[Indonesia](#)
[» 17. Bengkulu](#)
[» 08. Kepahiang](#)
[» 030. Seberang Musi](#)

Kecamatan/Desa	Blok Sensus (BS)			Rumahtangga				Penduduk			Rata2 ART	Sex Ratio	
	Hasil Peme taan	Hasil Listing	%	Jml KK Hasil Rekap Desa	Ruta Hasil Listing	%	C	%	Laki-laki	Perempuan			Total
000. SEBERANG MUSI	35	35	100.0	1,839	1,912	104.0	1,912	99.9	3,455	3,187	6,642	3.5	108.4
▶001. Benuang Galing	5	5	100.0	267	358	134.1	358	105.9	603	515	1,118	3.1	117.1
▶002. Air Selimang	4	4	100.0	117	224	191.5	224	87.1	393	386	779	3.5	101.8
▶003. Tebat Laut	5	5	100.0	230	215	93.5	212	98.6	378	335	713	3.3	112.8
▶004. Taba Padang	3	3	100.0	199	201	101.0	203	101.0	383	333	716	3.6	115.0
▶005. Lubuk Sahung	2	2	100.0	222	211	95.0	210	99.5	401	361	762	3.6	111.1
▶006. Temdak	3	3	100.0	119	133	111.8	133	100.0	258	234	492	3.7	110.3
▶007. Kandang	4	4	100.0	239	185	77.4	185	100.0	345	344	689	3.7	100.3
▶008. Cirebon Baru	3	3	100.0	129	121	93.8	122	100.8	241	238	479	4.0	101.3

## MONITORING LISTING (L1) MELALUI SMS

Masukan dari SMS



0852 6443 2010

0852 6465 2010

0857 6127 2010

0819 9080 2010

0838 9100 2010

**Mobile Call Center==>0812 8107 0701-05**

Perbedaan SMS - RBL1

SP1990, SP2000, SMS, RBL1

Sdr. Hermawan Agustina

Keluar

Click here to other comparison

RBL1 versi Jum'at 18 Juni 2010

Indonesia »

17. Bengkulu »

08. Kepahiang

Kab/Kec	Rumahtangga			Laki-laki			Perempuan			Penduduk		
	SMS	RBL1	Beda	SMS	RBL1	Beda	SMS	RBL1	Beda	SMS	RBL1	Beda
000. KEPAHIANG	31,665	31,660	5	63,986	63,492	494	60,674	60,539	135	124,660	124,031	629
▶ 010. Muara Kemumu	3,719	3,749	-30	6,972	6,605	367	6,094	5,942	152	13,066	12,547	519
▶ 020. Bermani Ilir	3,373	3,501	-128	6,870	7,056	-186	6,214	6,589	-375	13,084	13,645	-561
▶ 030. Seberang Musi	1,912	1,910	2	3,455	3,455	0	3,187	3,187	0	6,642	6,642	0
▶ 040. Tebat Karai	2,913	2,949	-36	6,124	6,261	-137	5,891	5,998	-107	12,015	12,259	-244
▶ 050. Kepahiang	9,812	9,815	-3	20,373	20,007	366	19,973	19,579	394	40,346	39,586	760
▶ 060. Kaba Wetan	2,777	2,794	-17	5,360	5,402	-42	4,917	4,949	-32	10,277	10,351	-74
▶ 070. Ujan Mas	4,802	4,548	254	9,868	9,716	152	9,569	9,438	131	19,437	19,154	283
▶ 080. Merigi	2,357	2,394	-37	4,964	4,990	-26	4,829	4,857	-28	9,793	9,847	-54

# Data Processing Context

1971 : OMR Technology, mainframe;

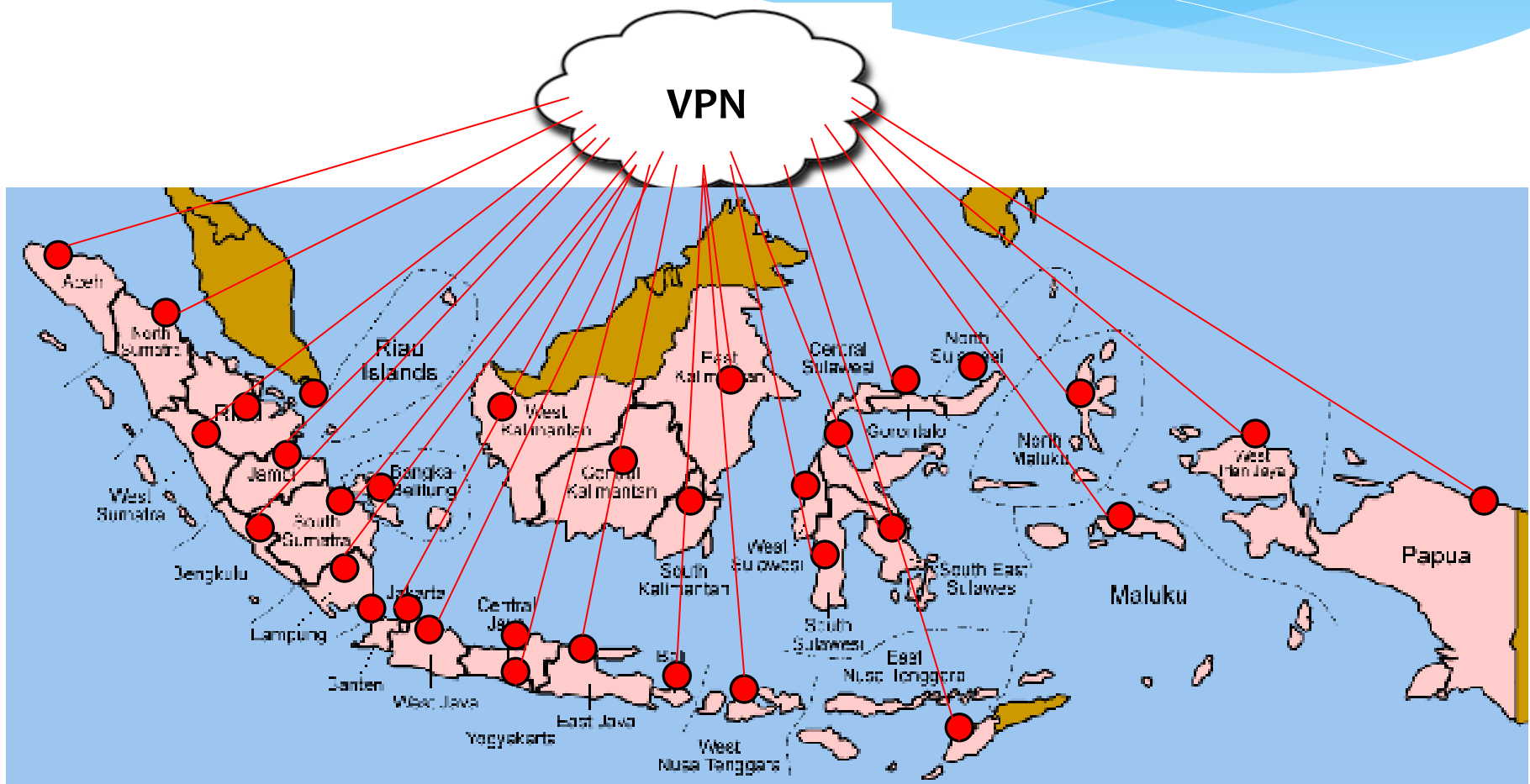
1980 : data entry, mainframe

1990 : data entry, mainframe;

2000 : OCR technology, PC clusters

2010 : ICR and mobile technology, PC clusters

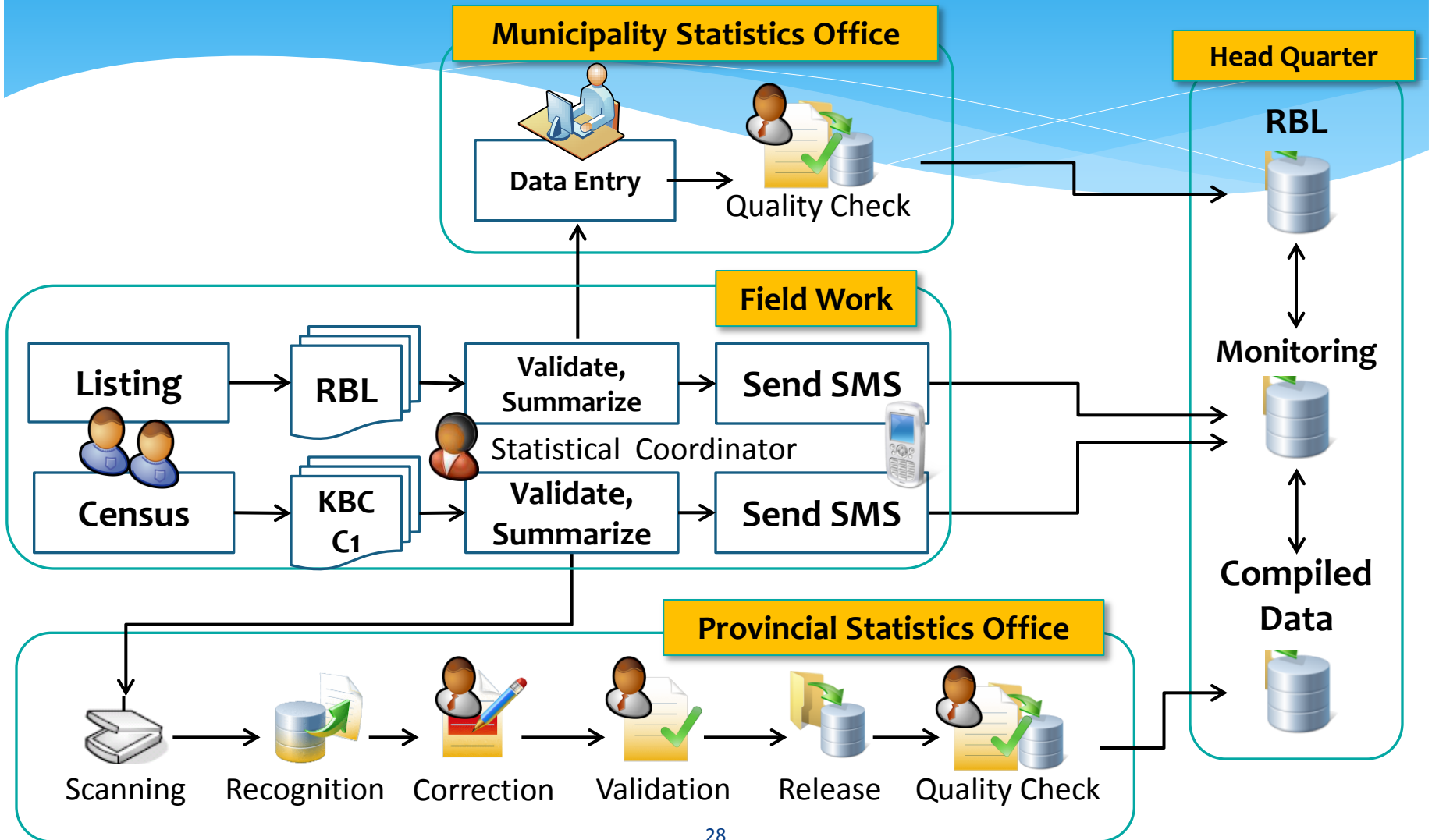
Located in 33 Provincial Statistical Offices



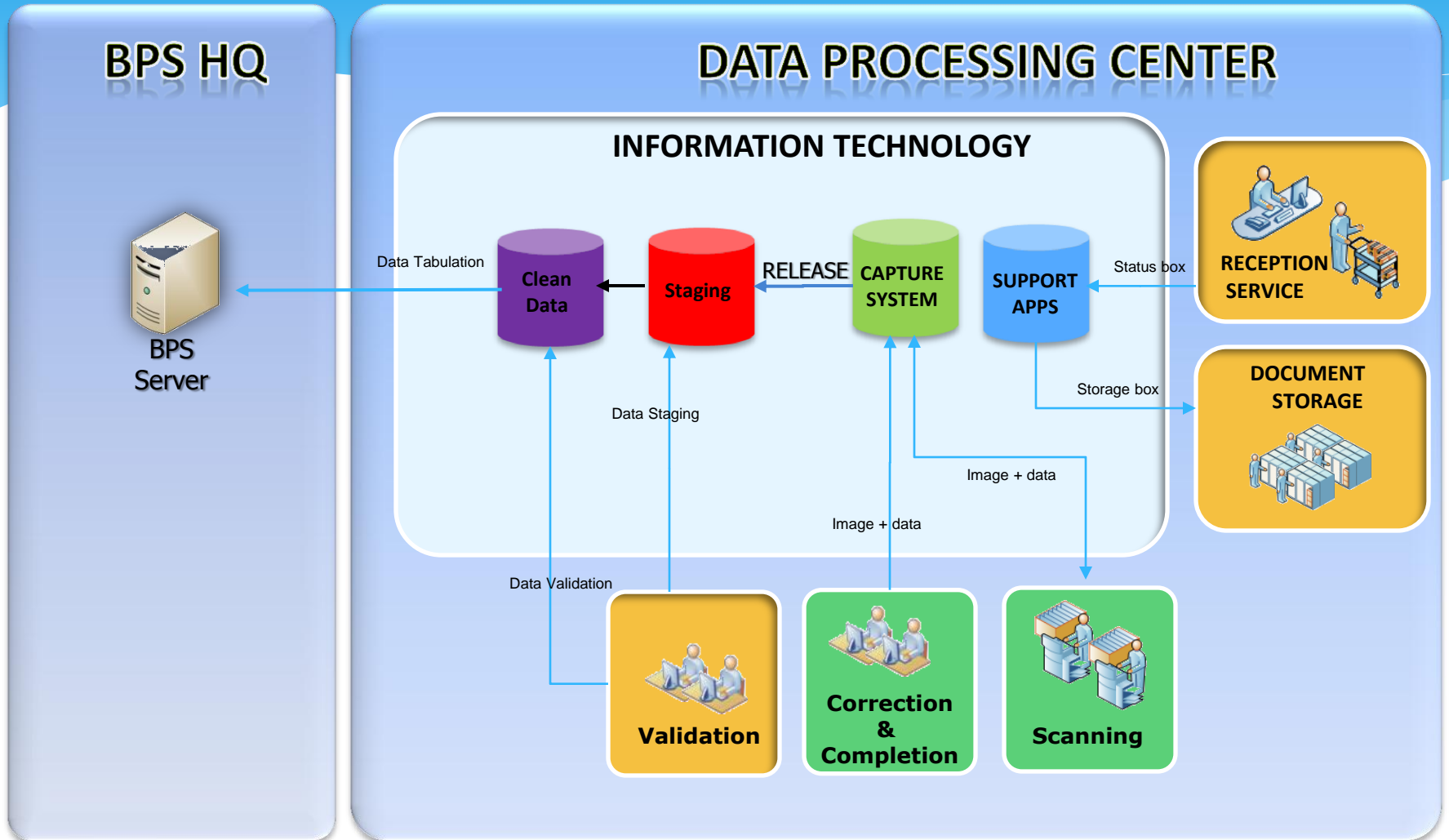
## Documents/Hardware distributed to 33 DPCs

Items	Quantity
# documents to be processed:	
- households	66,000,000
- individual	261,579,368
Scanners	51
Servers	76
PCs	1,775
Networking:	
- switch 48 nodes	39
- cables (m)	21,400

# Data Processing Context



# Flow of Data in DPC





# Monitoring and Quick Count Reporting

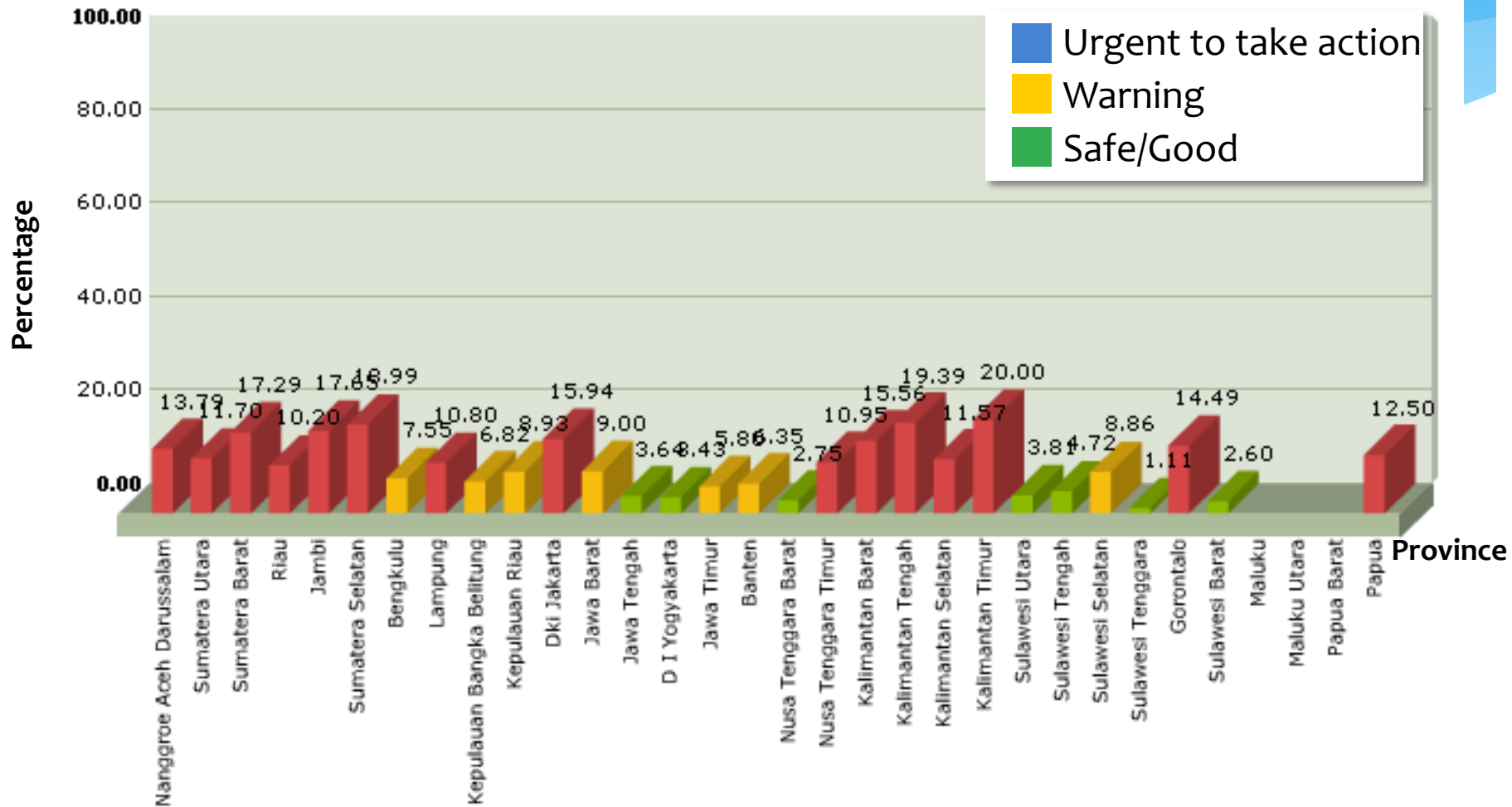
- Progress of enumeration can be monitored by BPS Districts, BPS Province, BPS Headquarter
- Facilitating quick reporting for preliminary results/figures
- Implementation:
  - Mobile phone of Field Coordinators, Sub-district Coordinators, and District Coordinators must be registered
  - After completing listing of CB, Field Coordinators sent messages (sms/text) to the BPS server.
  - Message: ID of CB, No. of HHs, Males, Females, Total
  - BPS disseminated all information on Website
  - Comparisons made between no. of HH in the mapping and census listing
  - District coordinators sent all completed listings through email from BPS District Offices everyday

# Data Quality Monitoring

- \* Early warning system to locate the occurrence of possible non-sampling errors to indicate inconsistency between data collected by enumerators and monitoring officers => facilitate BPS district coordinator to take necessary measures
- \* Report the possible errors via SMS
- \* Control and monitor inconsistency
  - \* Household members: relationships between household members and their guardian, number of household members, sex, group of ages, education attainment, marital status, etc.
  - \* Housing: floor types, sources of drinking water, electricity sources, toilet facilities, dwelling ownership, etc.
  - \* Coverage: map quality, enumerating direction, enumerating procedures, pasting sticker, physical buildings, etc
- \* Implementation
  - \* 382 districts, 1,146 sub districts; 7,772 census blocks
  - \* 1,600 monitoring officers (1,200 students of Statistical College and BPS HQ)

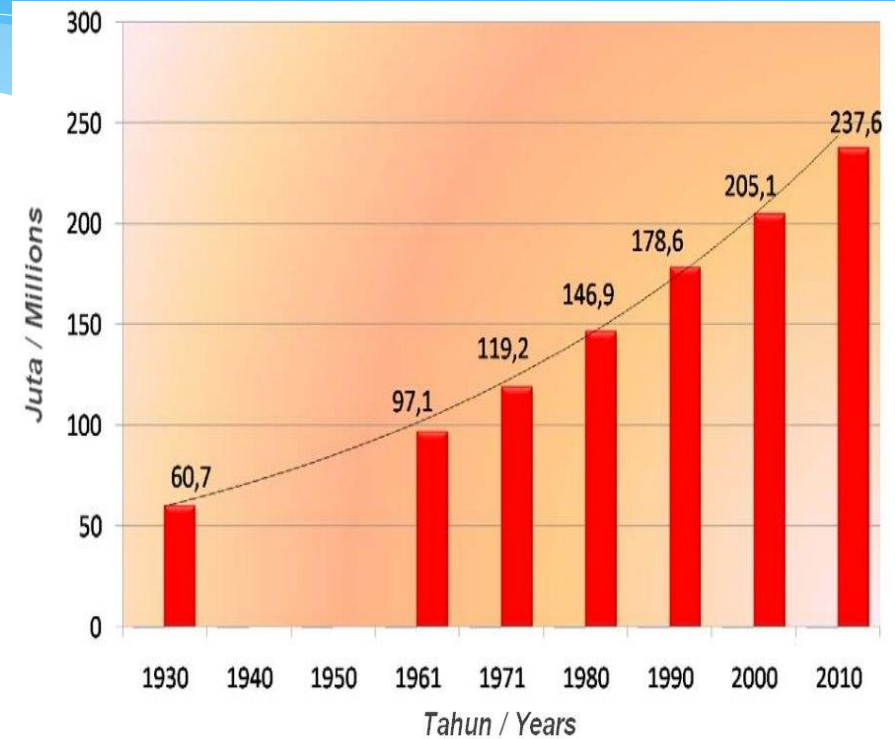
# Dashboard

## Inconsistency in Enumerating Direction



# Population of Indonesia

Sources	Male (000)	Female (000)	Total (000)
Preliminary figures [Quick Count Reporting]	119,508	118,048	237,556
Final figures	119,631	118,010	237,641



## Reliability : Indonesia's Population

### • Census Data Based on Age 1-2

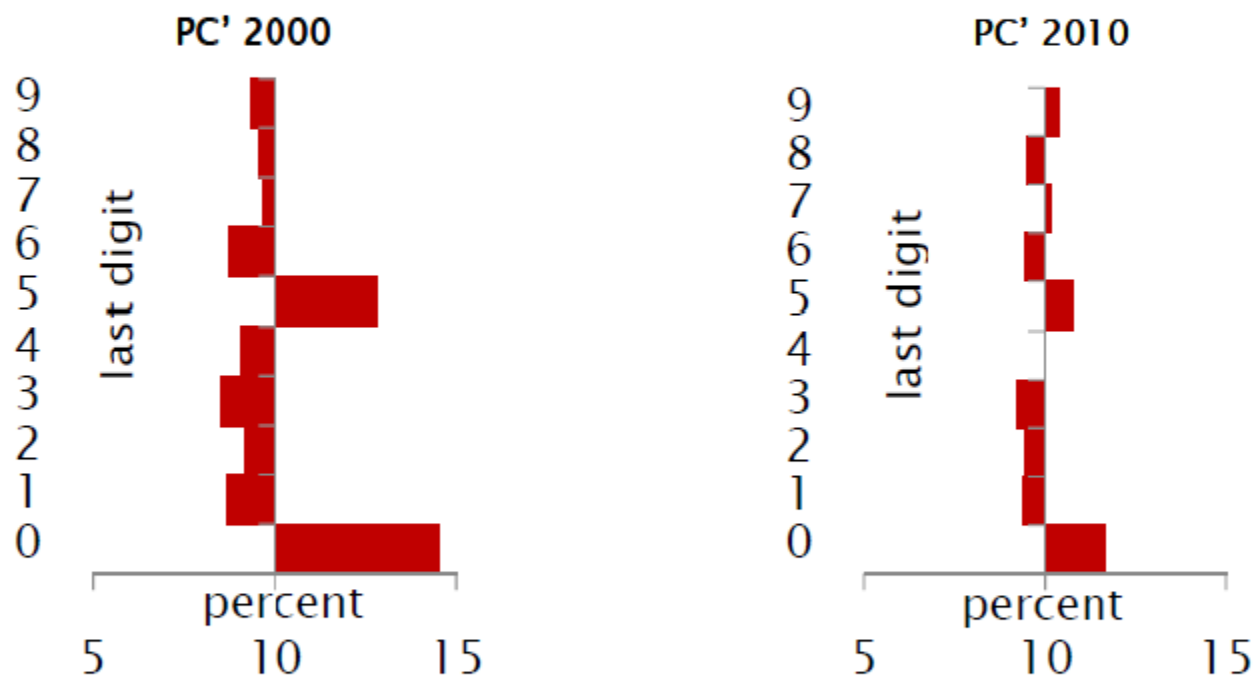
- ▶ Myer Index : digit preference observation ( 0 to 90)

last digit	blended population 2000		blended population 2010		
	percent	cum.	percent	cum.	
0	14.5	14.5	11.7	11.7	
1	8.7	23.2	9.4	21.1	
2	9.2	32.3	9.5	30.5	
3	8.5	40.9	9.2	39.8	
4	9.1	49.9	10.0	49.8	
5	12.8	62.7	10.7	60.5	
6	8.7	71.4	9.5	70.0	
7	9.6	81.1	10.2	80.1	
8	9.6	90.6	9.5	89.6	
9	9.4	100.0	10.4	100.0	
Myer index 2000 =		<b>7.3</b>	Myer index 2010 =		<b>3.0</b>

- ▶ Note : calculated (2011) based on Indonesian Population Census 2000 & 2010

## Reliability : Indonesia's Population Census Data Based on Age

2-2



- ▶ It shows the better data quality of the latest Indonesia's population census

*Note* : calculated (2011) based on Indonesian Population Census 2000 & 2010



## Reliability and Comparability : Indonesia's Population Census Data Based on Age and Sex Ratio 3- 3

- ▶ Normal
- ▶ Sex ratio shows the tendency of ascending smoothly among censuses

Age Group	sex ratio		
	1990	2000	2010
0-4	101	103	106
5-9	103	104	106
10-14	108	105	106
15-19	97	101	103
20-24	81	92	98
25-29	80	96	99
30-34	88	100	100
35-39	98	99	101
40-44	101	107	101
45-49	109	111	100
50-54	97	105	103
55-59	102	103	109
60-64	86	95	94
65-69	93	88	92
70-74	97	93	81
75+	94	86	72

▶ Note: calculated (2011) based on Indonesian Population Census 1990, 2000 & 2010

# Relevant Important Events to 2010 Census

- Presidential Speech to launch the 2010 Census: 30 April 2010 at 8 PM
- Census enumeration: 1-31 May 2010
  - At President's resident : 1 May 2010 at 10AM
  - At Vice President's resident : 1 May 2010 at 2PM
- Census date : 15 May 2010
- Post Enumeration Survey (PES) : June 2010
- Dissemination of Preliminary results : 17 August 2010 in front of the MPR (People's Consultative Assembly)
- Data Processing : May-December 2010

# Internet processing