



**TÜRKİYE CUMHURİYET
MERKEZ BANKASI**

ISLAMIC BANKING STATISTICS IN TURKEY

**Ahmet Tayyar FIRAT
Statistics Department
Central Bank of Republic of Turkey**

Expert Group Meeting on Islamic Banking and Finance Statistics

March 25-26, 2014

Ankara

- 1. History and General Information**
- 2. CBRT Statistics on Islamic Banks**
- 3. Analysing Islamic Banking Statistics**
- 4. Conclusions**

1983

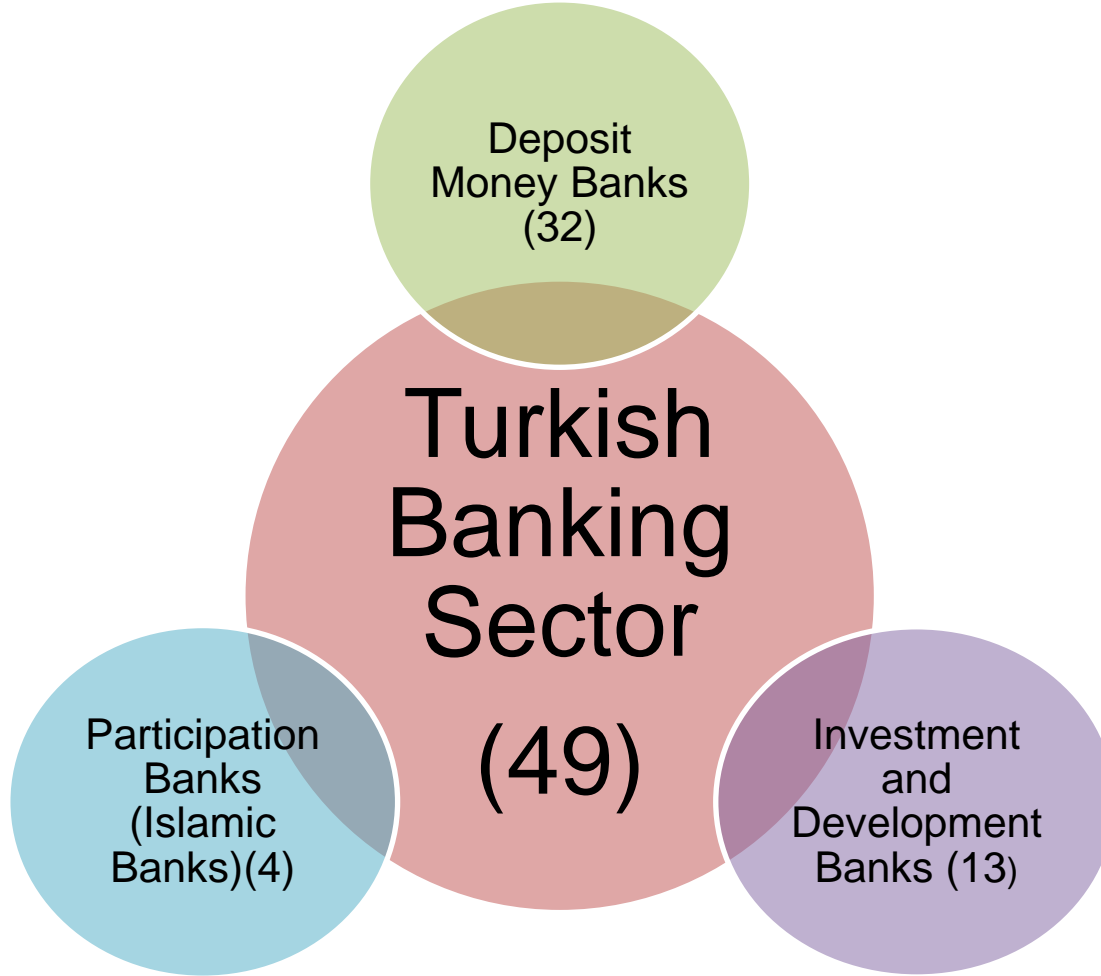
- Establishment of Special Finance Houses disseminated in the Official Gazette at 19 December 1983.

1984

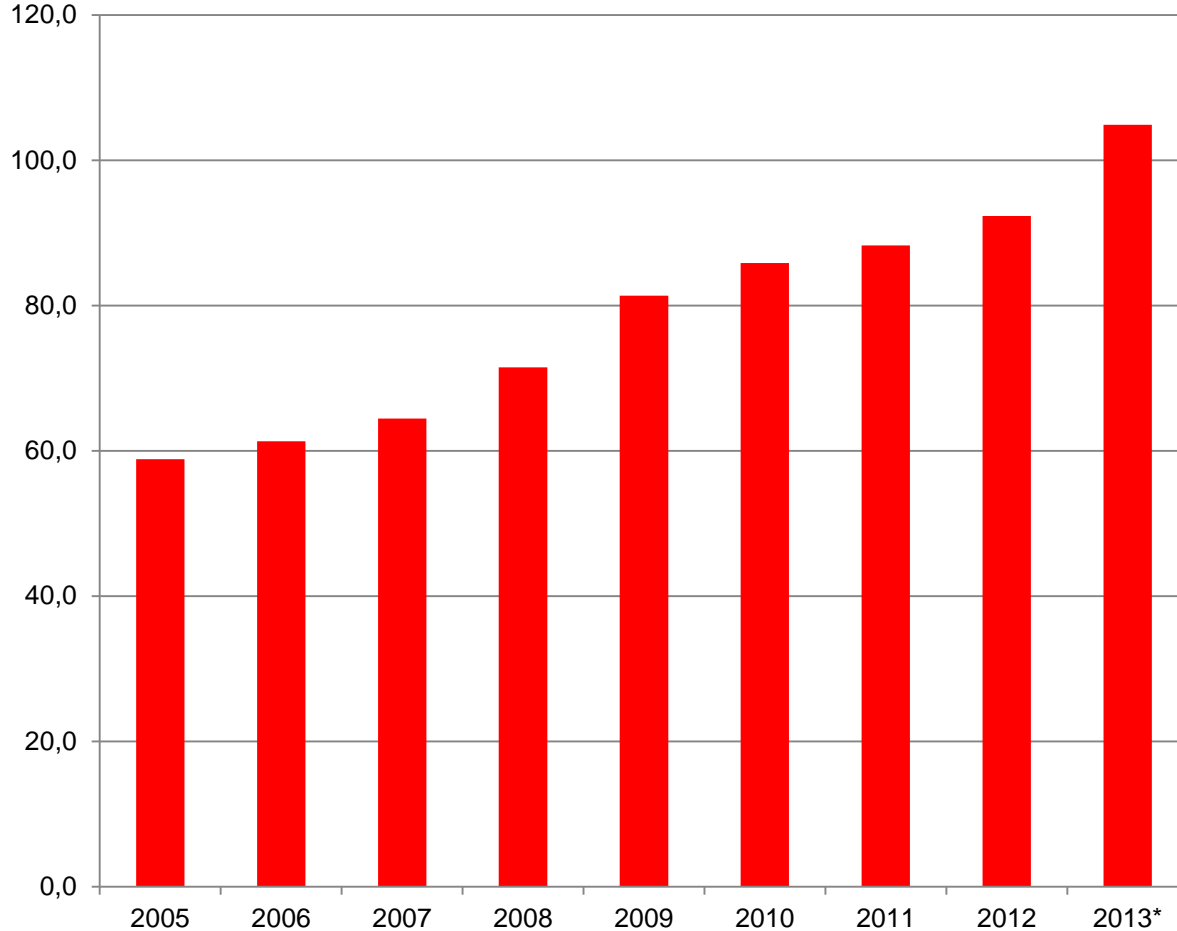
- First Special Finance House in Turkey was founded.

2005

- According to 5411 Banking law, Special Finance Houses became Participation Banks.



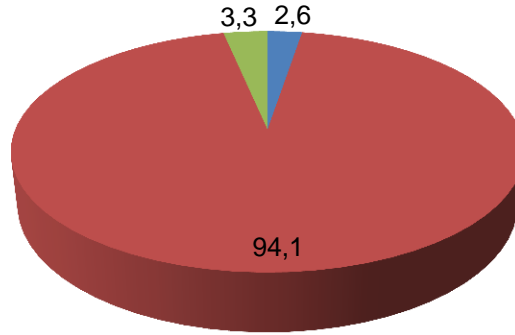
Turkish Banking Sector/ GDP (%)



Billion TRY	Banking Sector	GDP
2005	382	680
2006	465	758
2007	543	843
2008	680	951
2009	775	953
2010	943	1,099
2011	1,146	1,298
2012	1,307	1,416
2013*	1,658	1,581

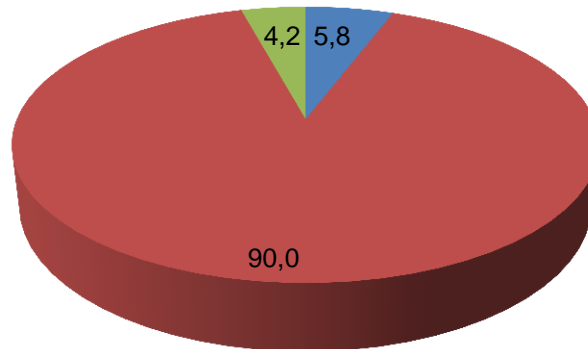
* 2013 Q4 GDP data is prediction

Banking Sector Assets - 2005



■ Participation Banks ■ Deposit Money Banks ■ Investment and Development Banks

Banking Sector Assets - 2013



■ Participation Banks ■ Deposit Money Banks ■ Investment and Development Banks

CBRT Law Article 4/g:

“The Bank shall, in order to monitor financial markets, be authorized to request necessary information and to gather statistical information from banks, other financial institutions and from establishments and institutions assigned to regulate and supervise these.”

- Central Bank of Republic of Turkey (CBRT) disseminates statistics of Islamic Banks in the name of “Participation Banks”.
- Weekly Money and Banking Statistics.
- Monthly Money and Banking Statistics.
- Both statistics include only resident branches of banks.
- Monetary liabilities of Participation Banks was added to money supply beginning from 2005 data, in 2007.
- In the CBRT’s data delivery system, users can reach participation banks data beginning from December 2005 data.

•How can you reach our statistics?

1) <http://www.tcmb.gov.tr/yeni/eng/> ➡ Data ➡ Periodic Data

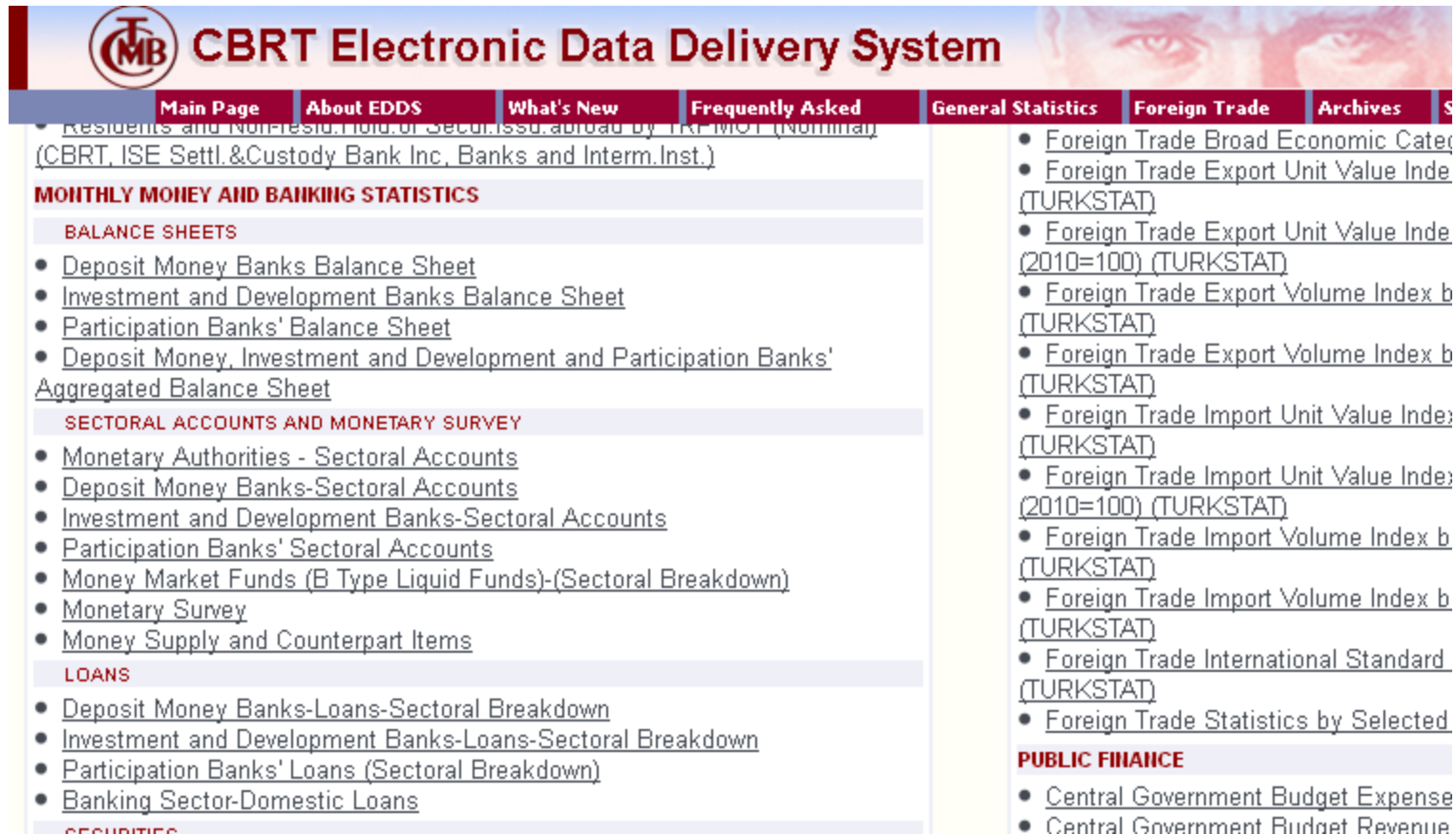
- Weekly Money and Banking Statistics
- Monthly Money and Banking Statistics

The screenshot shows the TCMB website interface. At the top, there is a banner with the TCMB logo and the text "MERKEZ BANKASI". Below the banner, a navigation menu is visible with the following items: "Financial Stability", "Monetary Policy", "Publications", "Data", "Announcements", "Remarks", and "Bank Profile". A search box is located to the right of the menu. Below the menu, there is a sub-menu with the following items: "Exchange Rates", "Financial Markets", "Banking Data", "Surveys", "Periodic Data", and "Data Release Calendar". The main content area displays a list of statistics, each with a document icon and a title:

- International Reserves/Foreign Currency Liquidity
- Monthly Money and Banking Statistics
- Non-residents' Holdings of Securities
- Outstanding Loans Received From Abroad by Private Sector
- Real Effective Exchange Rate
- Short Term Debt Statistics
- Statistics of Nonbank Financial Sector
- Weekly Money and Banking Statistics

•How can you reach our statistics?

2) <http://evds.tcmb.gov.tr/yeni/cbt-uk.html>



TMB CBRT Electronic Data Delivery System

[Main Page](#) [About EDDS](#) [What's New](#) [Frequently Asked](#) [General Statistics](#) [Foreign Trade](#) [Archives](#)

Residents and Non-Residents Issued Abroad by TCMIO (Nominal)
(CBRT, ISE Settl.&Custody Bank Inc, Banks and Interm.Inst.)

MONTHLY MONEY AND BANKING STATISTICS

BALANCE SHEETS

- [Deposit Money Banks Balance Sheet](#)
- [Investment and Development Banks Balance Sheet](#)
- [Participation Banks' Balance Sheet](#)
- [Deposit Money, Investment and Development and Participation Banks' Aggregated Balance Sheet](#)

SECTORAL ACCOUNTS AND MONETARY SURVEY

- [Monetary Authorities - Sectoral Accounts](#)
- [Deposit Money Banks-Sectoral Accounts](#)
- [Investment and Development Banks-Sectoral Accounts](#)
- [Participation Banks' Sectoral Accounts](#)
- [Money Market Funds \(B Type Liquid Funds\)-\(Sectoral Breakdown\)](#)
- [Monetary Survey](#)
- [Money Supply and Counterpart Items](#)

LOANS

- [Deposit Money Banks-Loans-Sectoral Breakdown](#)
- [Investment and Development Banks-Loans-Sectoral Breakdown](#)
- [Participation Banks' Loans \(Sectoral Breakdown\)](#)
- [Banking Sector-Domestic Loans](#)

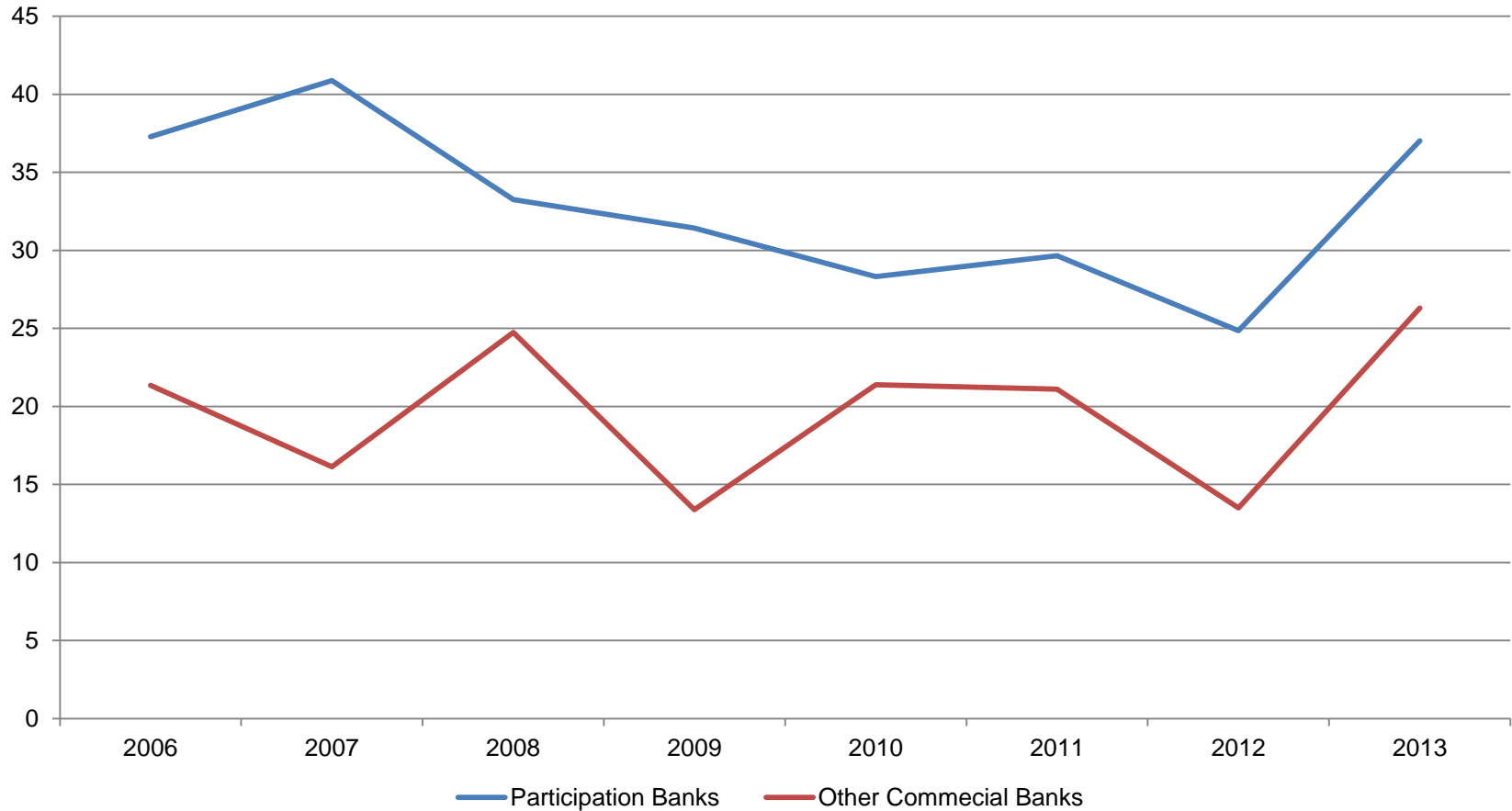
SECURITIES

- [Foreign Trade Broad Economic Category \(TURKSTAT\)](#)
- [Foreign Trade Export Unit Value Index \(2010=100\) \(TURKSTAT\)](#)
- [Foreign Trade Export Unit Value Index b \(2010=100\) \(TURKSTAT\)](#)
- [Foreign Trade Export Volume Index b \(TURKSTAT\)](#)
- [Foreign Trade Export Volume Index b \(TURKSTAT\)](#)
- [Foreign Trade Import Unit Value Index \(TURKSTAT\)](#)
- [Foreign Trade Import Unit Value Index \(2010=100\) \(TURKSTAT\)](#)
- [Foreign Trade Import Volume Index b \(TURKSTAT\)](#)
- [Foreign Trade Import Volume Index b \(TURKSTAT\)](#)
- [Foreign Trade International Standard \(TURKSTAT\)](#)
- [Foreign Trade Statistics by Selected](#)

PUBLIC FINANCE

- [Central Government Budget Expense](#)
- [Central Government Budget Revenue](#)

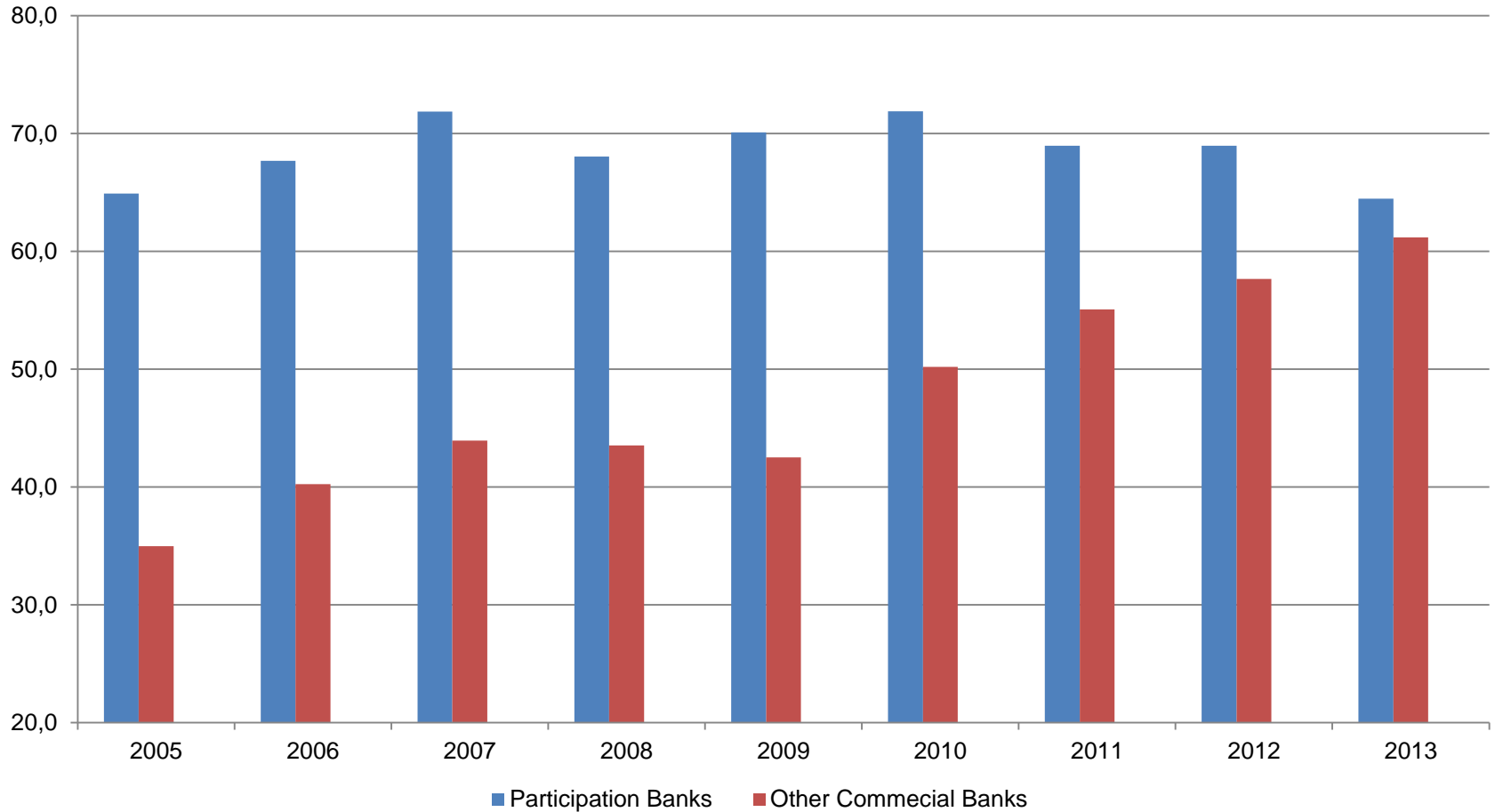
Assets Annual Growth Rate (%)



Source : CBRT

➤ Participation Banks have been grown rapidly than other commercial banks in the 2005 – 2013 period.

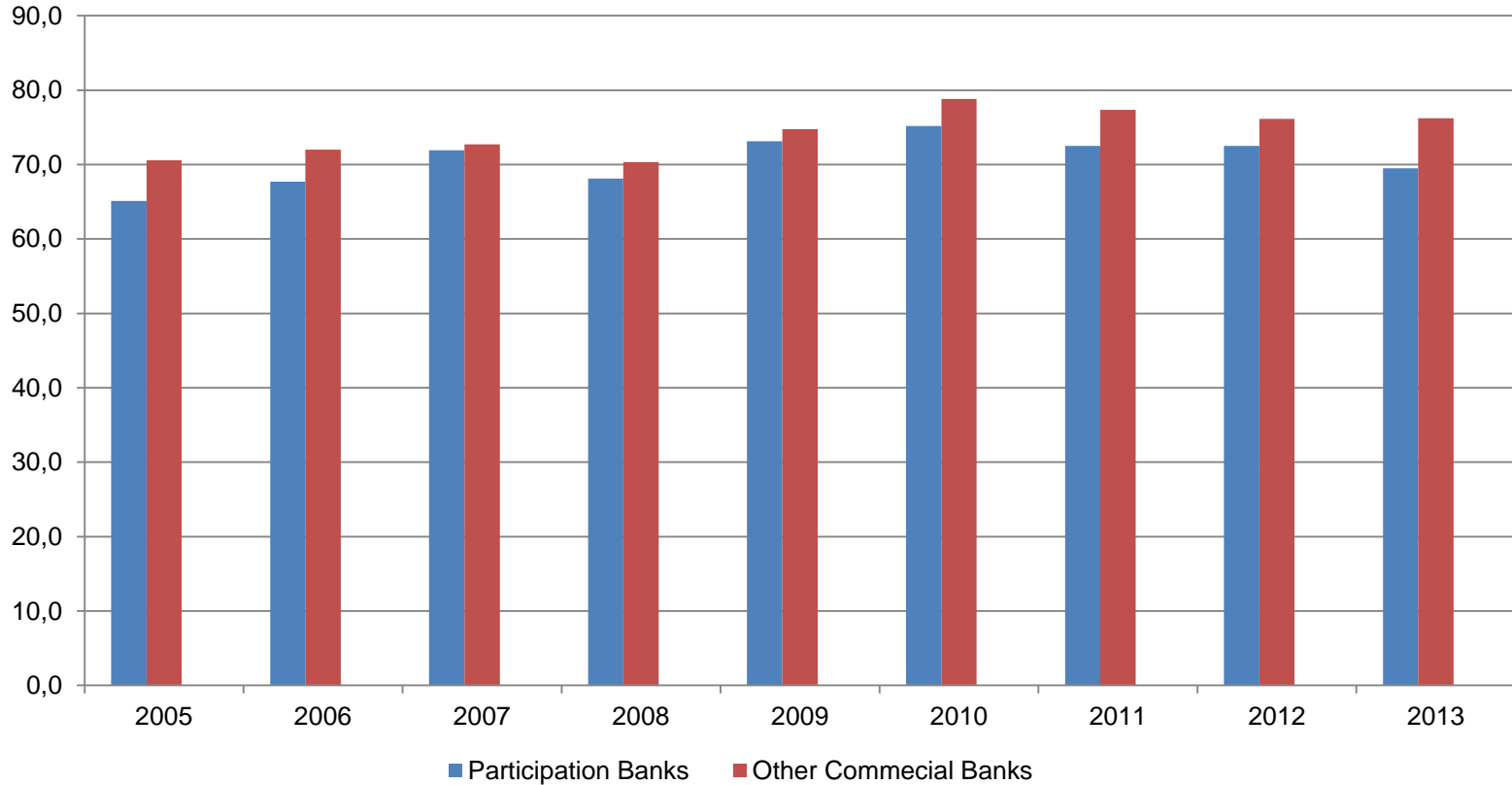
Loans / Assets (%)



Source : CBRT

➤ Participation banks loans ratio in assets is higher than other commercial banks' loans ratio.

(Loans + Securities) / Assets (%)

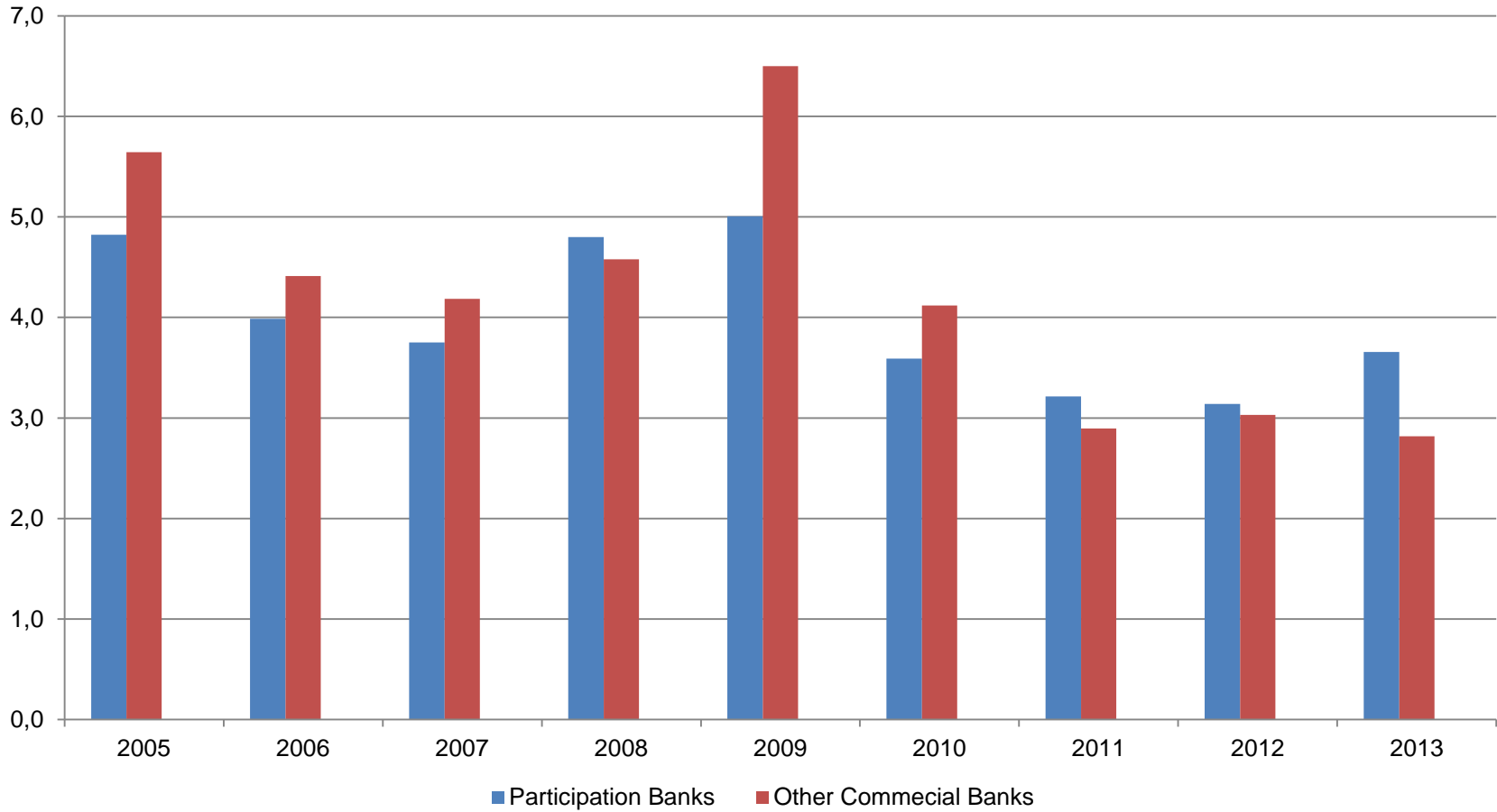


Source : CBRT

➤ When we add securities to loans, the previous ratio is very similar between participation banks and other commercial banks

➤ What does it mean?

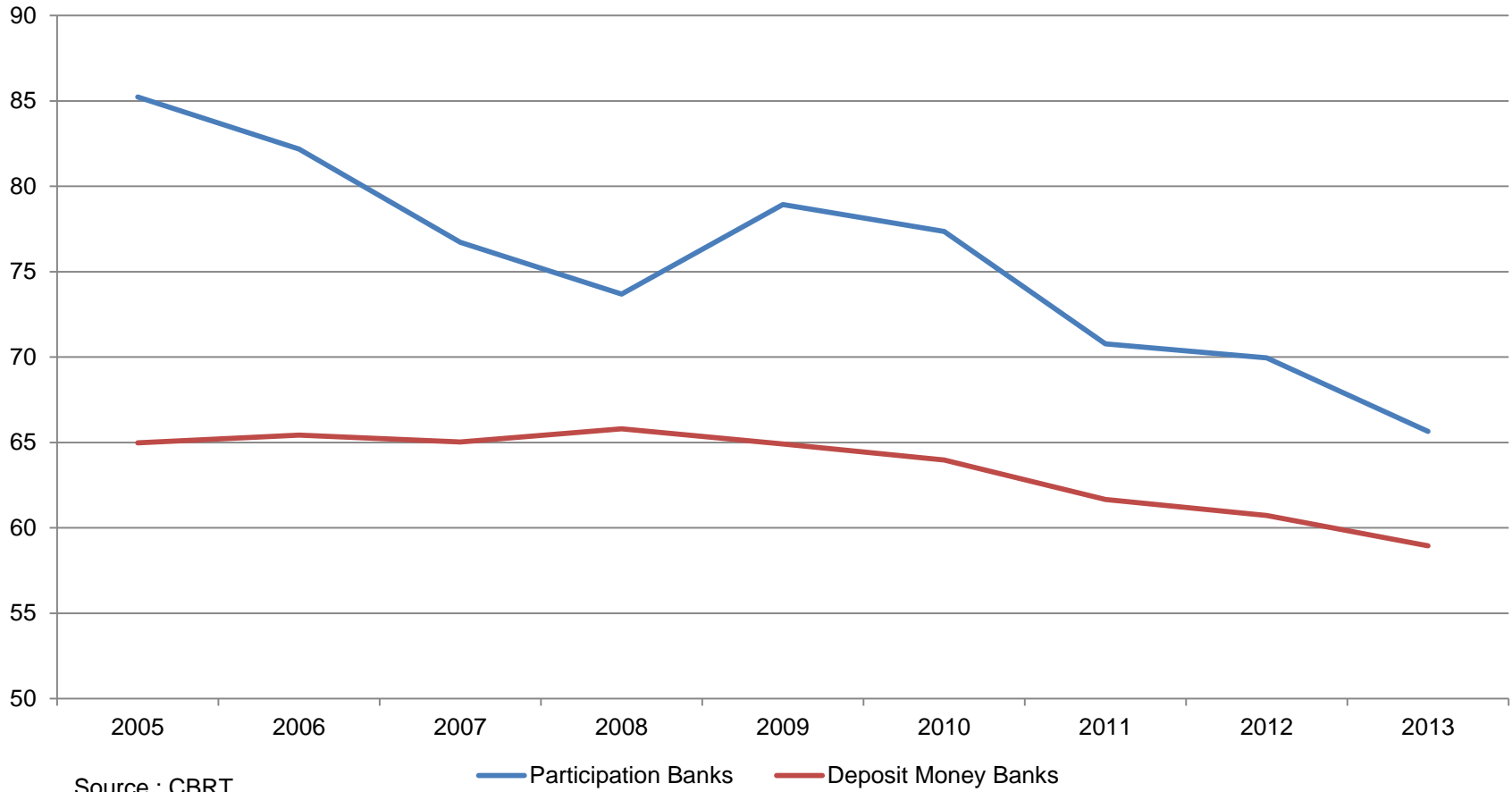
Past - Due Loans / Loans (%)



Source : CBRT

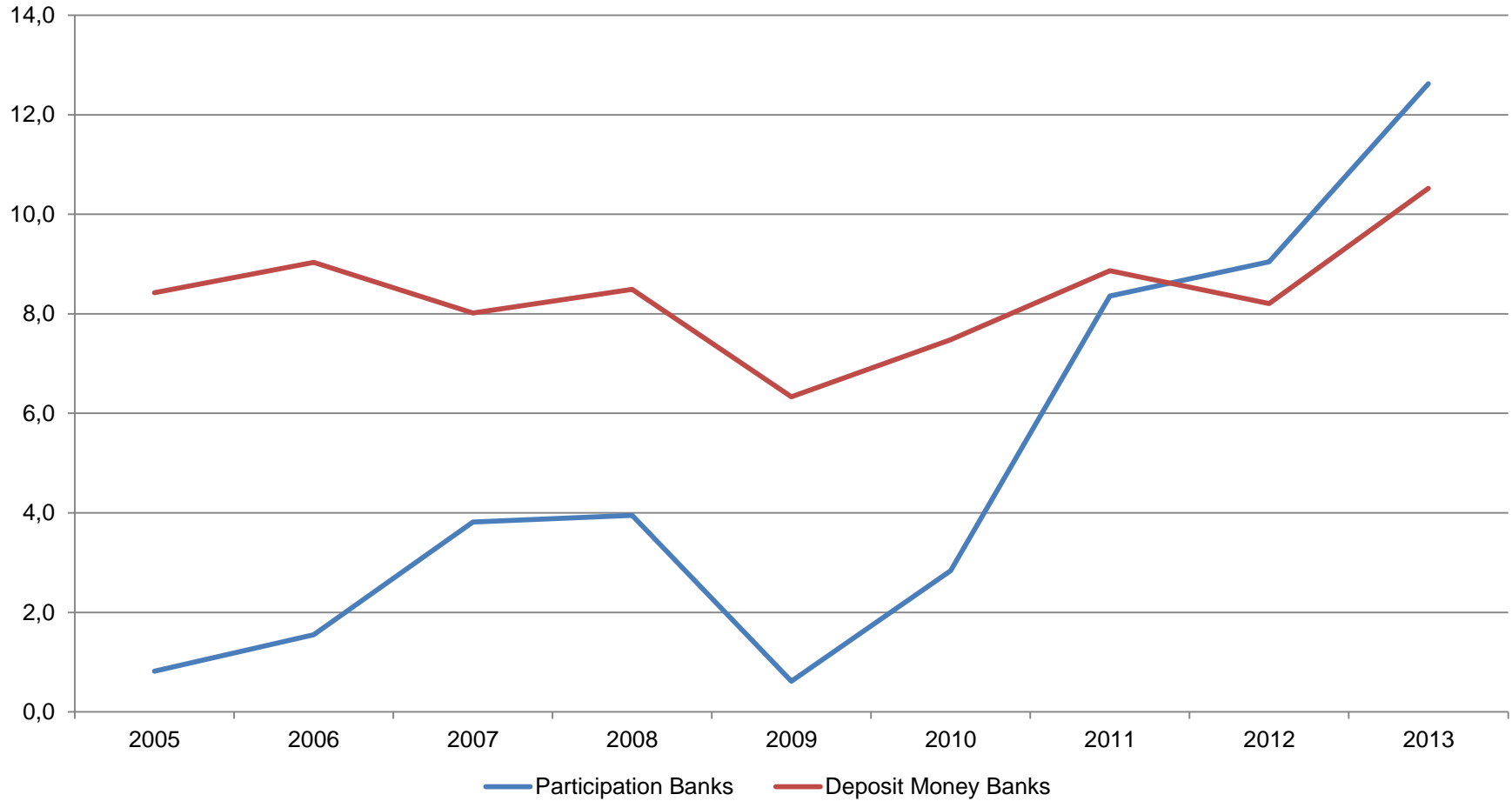
➤ Participation banks' bad loans ratio in loans portfolio has been higher than other commercial banks ratio since 2011.

Deposits(Funds) / Liabilities



- Participation banks' funds ratio in liabilities have been decreasing rapidly than other commercial banks.
- While funds is decreasing, which instrument is increasing in the liability side?

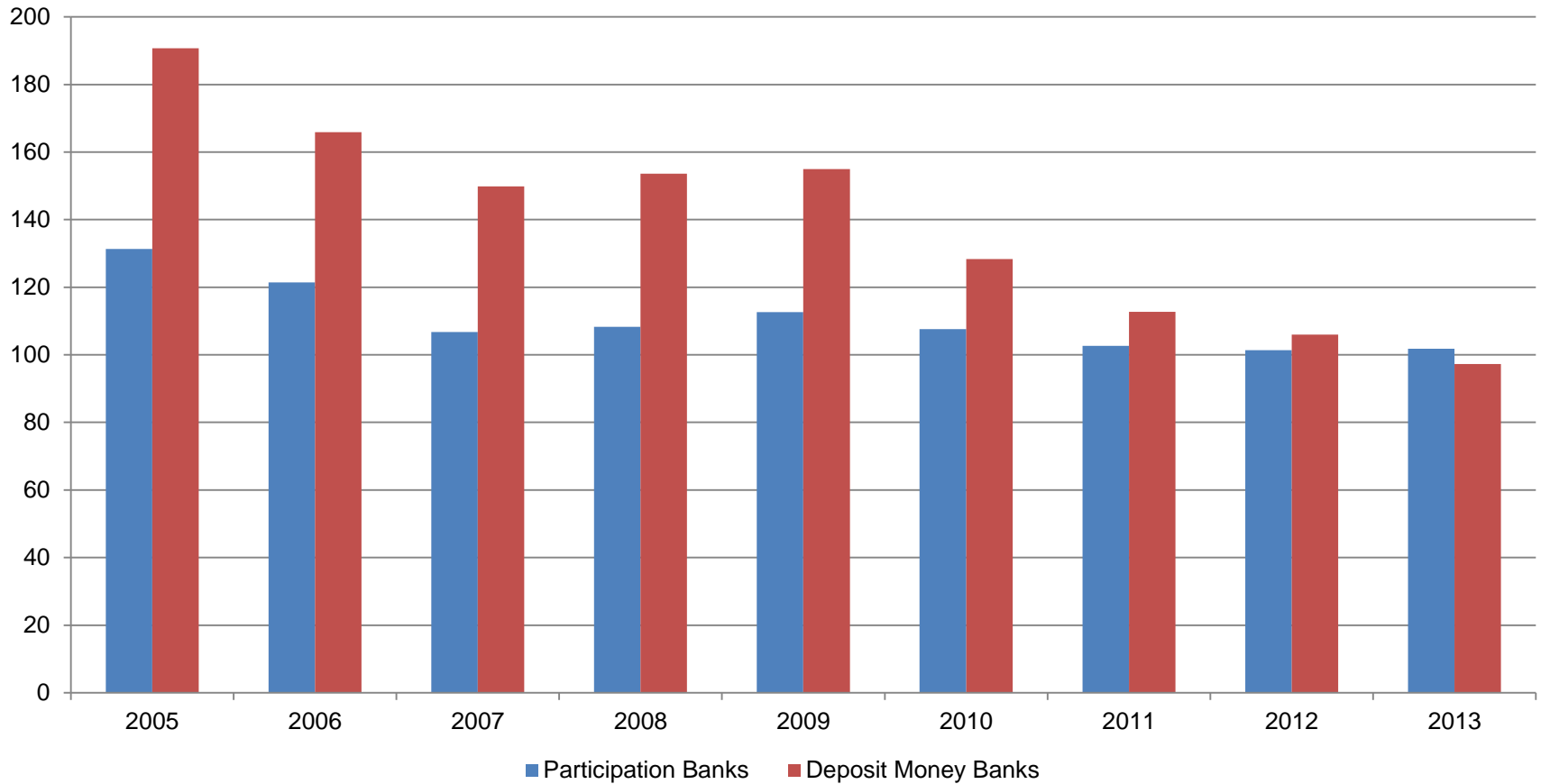
Loans Received From Abroad / Liabilities (%)



Source : CBRT

➤ Participation banks have been receiving loans from abroad since 2009 in a remarkable way.

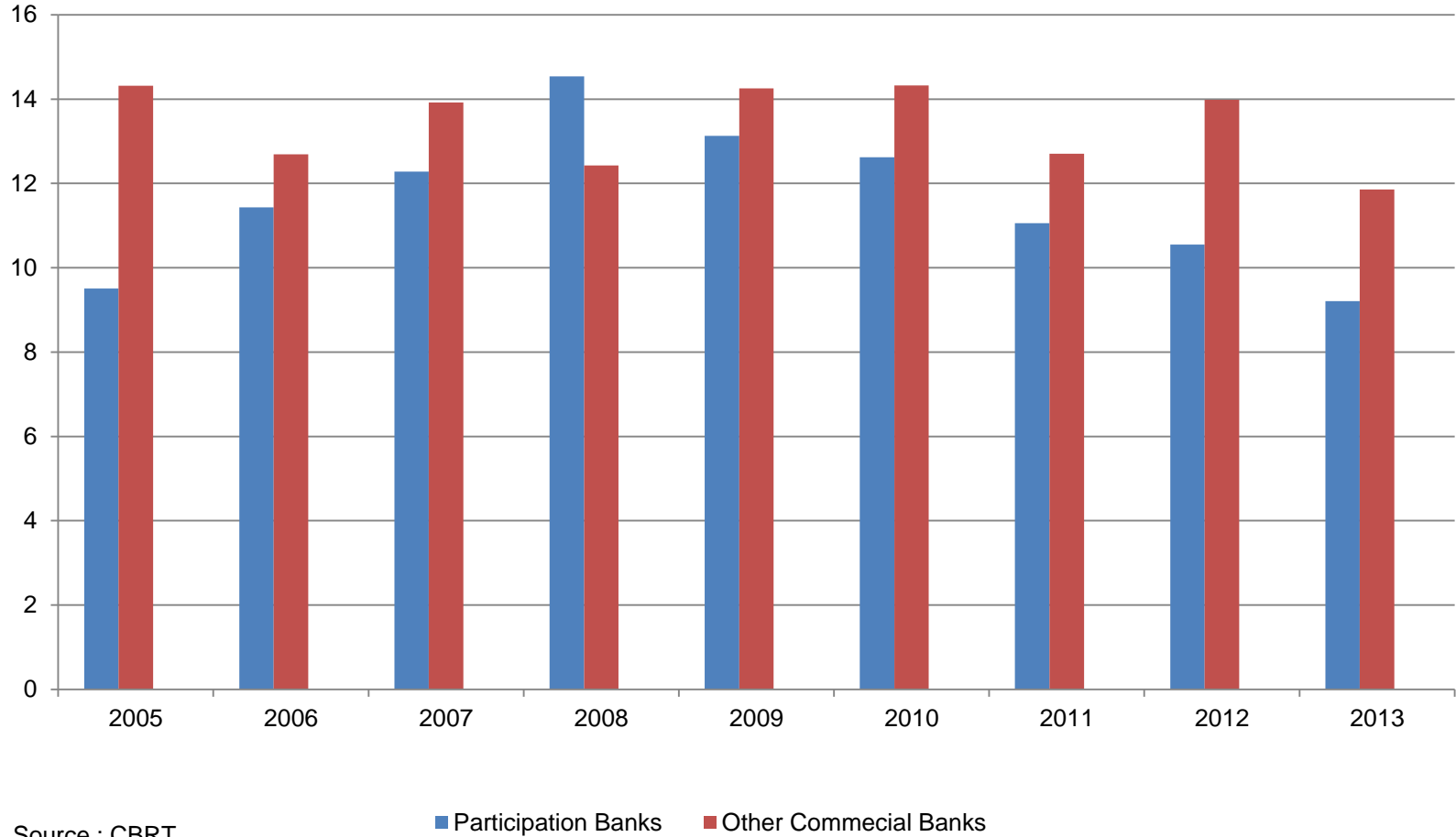
Deposits (Funds) / Loans (%)



Source : CBRT

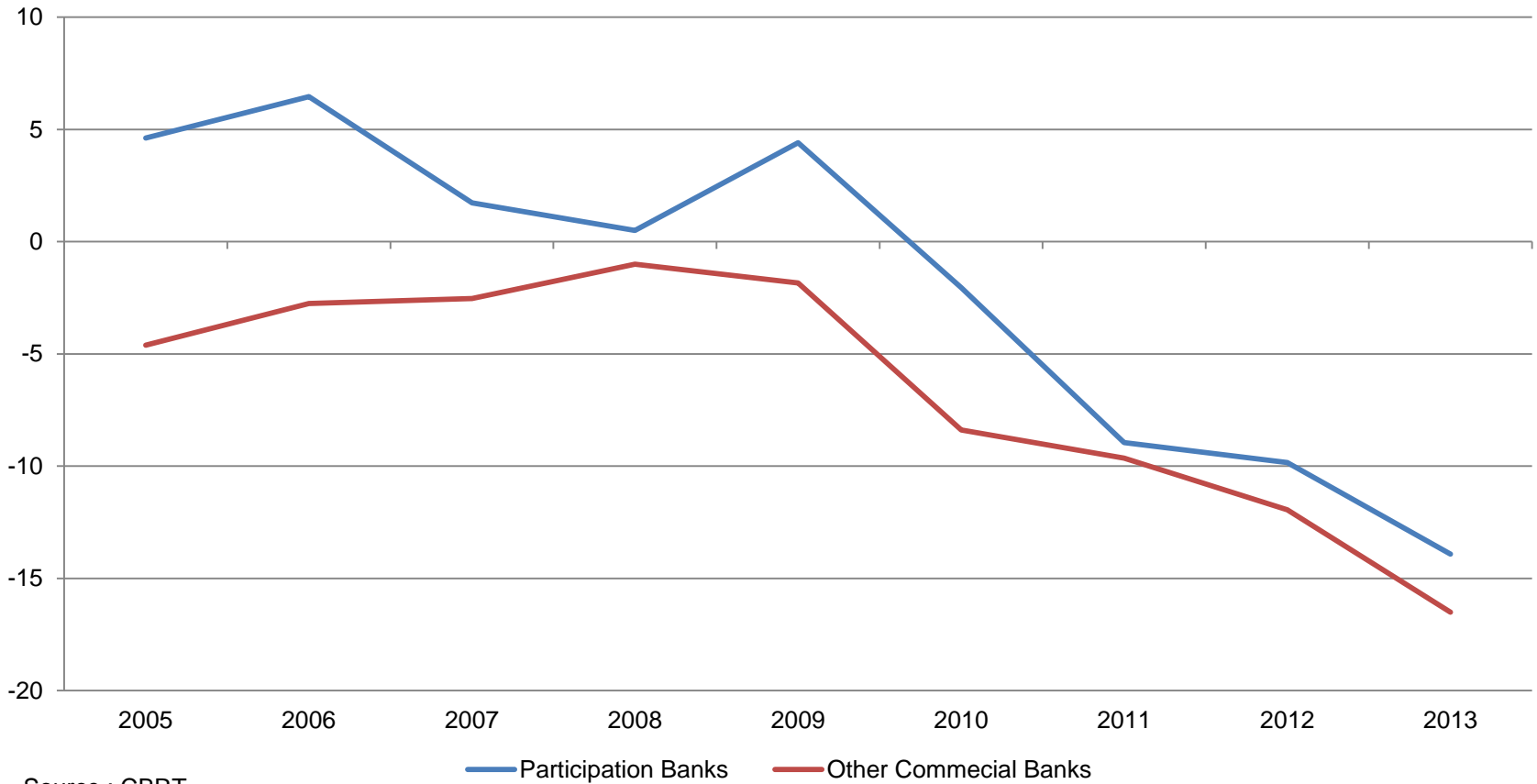
➤ At the end of 2013, participation banks' deposits almost same with their loans portfolio.

Shareholders' Equity / Liabilities (%)



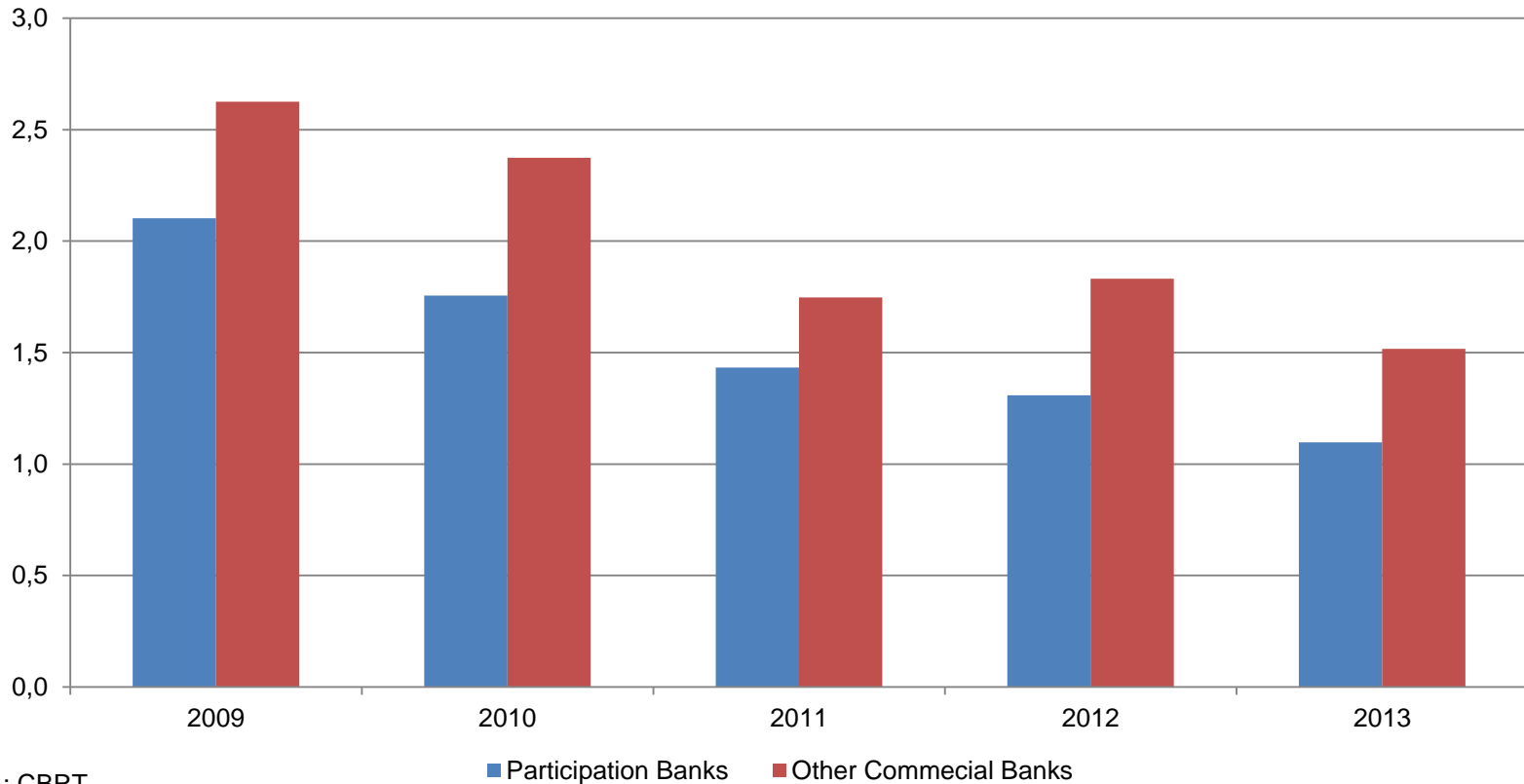
➤ Other commercial banks shareholders' equity ratio in the liabilities has been more than which participation banks has, since 2009.

Net Foreign Assets / Assets (%)



➤ Since 2010 participation banks' foreign liabilities is more than their foreign assets.

Net Profit / Liabilities (%)



Source : CBRT

➤ Other commercial banks' net profit ratio in liabilities is higher than participation banks ratio.

- 2005 – 2013 period, Turkish banking sector has been grown faster than GDP and Participation (Islamic) Banks have been grown faster than other commercial banks.
- According to CBRT law, all banks in Turkey (including participation banks) have to send their data to the CBRT.
- CBRT disseminates participation and other commercial banks statistics at weekly and monthly frequency.
- Participation Banks use their funds to give credit, instead of buying securities. The amount of their funds in liabilities and loans in assets side are almost same.

- Participation Banks have more past-due loans in their loan portfolio than other commercial banks.
- Shareholders' equity ratio in participation banks liability is less than other commercial banks in recent years.
- Other commercial banks' net profit ratio in liabilities is higher than participation banks ratio.
- Public Deposit Banks (Ziraat Bankası, Halkbank and Vakıfbank) are also planning to found participation banks in Turkey.

PLEASE CONTACT FOR FURTHER INFORMATION:

**AHMET TAYYAR FIRAT
PHONE: +90 312 5076927
E-MAIL: tayyar.firat@tcmb.gov.tr**

**CENTRAL BANK OF TURKEY
STATISTICS DEPARTMENT
MONETARY AND FINANCIAL STATISTICS DIVISION**