



T.R. MINISTRY OF FAMILY AND SOCIAL POLICY
General Directorate of Social Assistance

SOCIAL ASSISTANCE PROGRAMS AND AS AN INNOVATIVE APPROACH FOR SOCIAL ASSISTANCE: CONDITIONAL CASH TRANSFERS IN TURKEY

Caner ESENYEL

Family and Social Politics Expert
Department of Social Assisstances



Topics will be covered:

1. **Explaining** Our Main Principles for Social Assistance programs,
2. **Distinguishing** Social Assistance programs by their aims,
3. **Explaining** assistance programs: Family, Health, Education and special assistance programs,
4. **As an innovative approach** for social assistance: Explaining Conditional Cash Transfer Program in Turkey
5. **Some statistical data** for social assistance programs conducted by GDSA

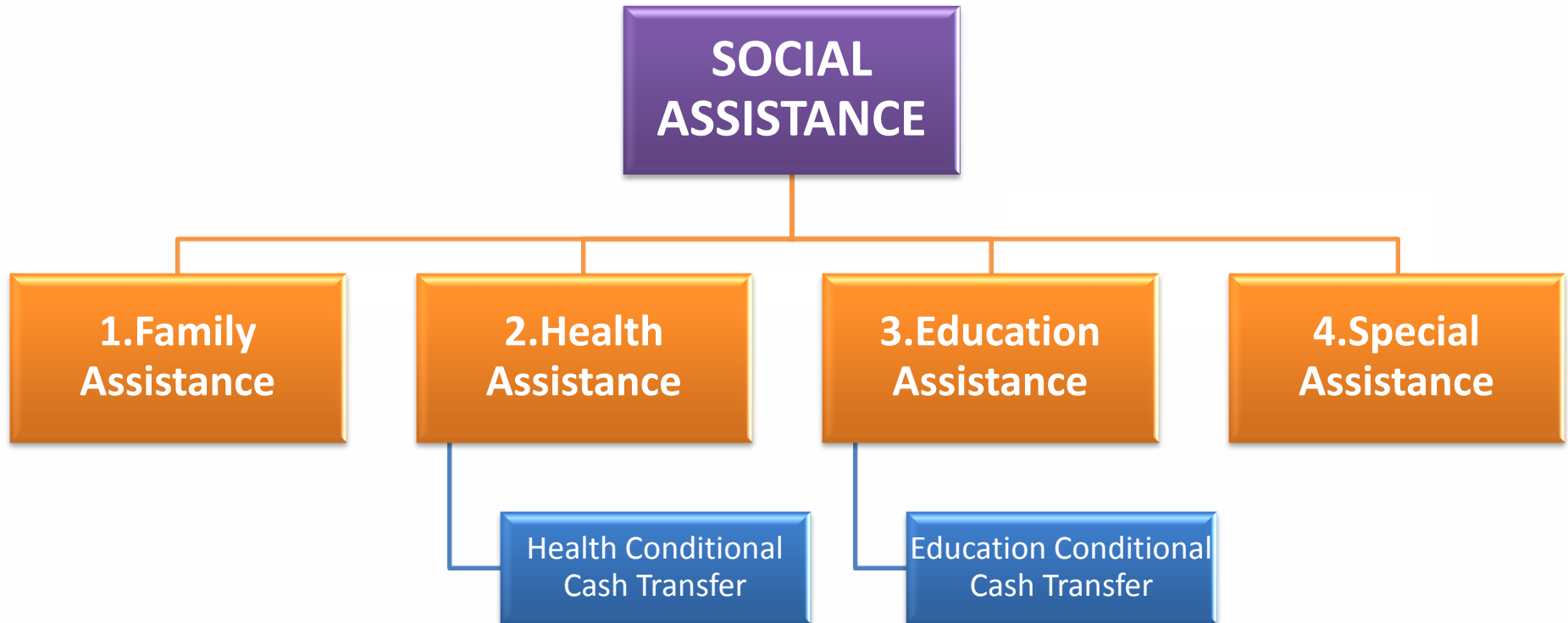


What are our **MAIN PRINCIPLES** for Social Assistance Programs?

- Step by step allocating all assistance programs to real needy people and constructing **reliable and sustainable** tools for finding out needy people,
- Instead of providing daily supports, in order to prevent intergenerational transfer of poverty from family to children, trying to develop mechanisms those strengthening **human capital** by emphasizing programs on basic services such as education and health,
- And finally spreading consistently all assistance programs all over the country by committing ourselves to use new **technologies**.



What are the Social ASSISTANCE Programs?





Social ASSISTANCE Programs:

1. FAMILY ASSISTANCE

- Food Assistance: In order to meet the basic food needs of needy and vulnerable citizens, resource from the Fund is transferred to SAS Foundations before religious festivals.
- Heating Assistance: Since 2003 at least 500 kg coal which is mined in Turkey per household distributed by SASF to the needy citizens. These coal supports are bagged with modern standards and delivered to the houses without any of charge before every winter.
- Sheltering Assistance: Needy and vulnerable citizens who live in old, and unhealthy houses are supported by cash assistances for the maintenance and repair of the houses.

Except for the sheltering assistances, food and heating assistances have been conducted periodically every year in the same period.



Social ASSISTANCE Programs:

2. HEALTH ASSISTANCE:

Assistance for Medical Costs: Costs of imported medicines that are not sold in Turkey and not covered by Green Card have been covered by GDSA for green card holders.

Assistance for surgery or treatment in other countries: Costs of surgeries or treatments that are not possible in Turkey and not covered by Green Card have been covered by GDSA for green card holders.

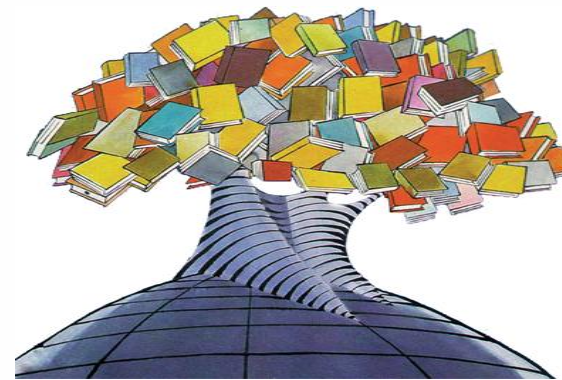
Assistance for emergency health costs: Costs of emergency health payments of citizens who have no any coverage of health insurance.



Social ASSISTANCE Programs:

3. EDUCATION ASSISTANCE:

- **Educational Material Assistance** (*free books*),
- **Bussing System and Lunch Assistance** (*providing transfers and meal to the students*),
- **Higher Education Scholarship**,
- **Education Assistance for the Handicapped** (*providing transfers and meal to the handicapped students*),
- **Other Education Assistance** (*scholarship for private courses, sheltering...etc*).





Social ASSISTANCE Programs:

4. SPECIAL ASSISTANCE *(Support for the specific purposes):*

- **Soup Kitchens** *(there are about 50 soup kitchens all over the country and the meals are given everyday),*
- **Various assistance** to those people who are suffered from natural disasters, terror, fire etc.



As a new approach for social assistance: Conditional Cash Transfer Program in Turkey

CCT program has been implemented since 2003 in Turkey. Aproximetly **1,5 billion** US \$ have been allocated to about **1,5 million** beneficiary households. It is fully computerised and all the applicants' information such as address, job and asset status are being investigated automatically and periodically through 10 govermental databases.

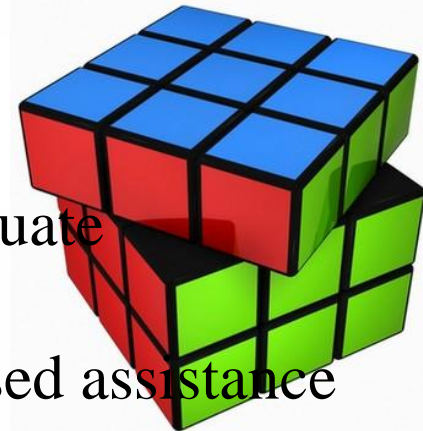




As a new approach for social assistance: Conditional Cash Transfer Program in Turkey

CCT program has been an innovative and a new approach for all the social assistance programs in Turkey because:

- It provides continuous cash transfer,
- It is conditional on positive behavioral changes
 - Keeping children in school
 - Ensuring children and pregnant women receive adequate immunization, basic health care and nutrition,
- It is the first computer based and scoring formula based assistance program,
- It provides to trace the applicants' socio-economical and conditional based status by time,





As a new approach for social assistance: Conditional Cash Transfer Program in Turkey

The target group of the CCT program is;

-Education Supports

1-12 grade students

-Health Supports

Children aged between 0-6

What are the CCT Conditions?

•Education

–School enrollment

–School attendance (80%)

–Level / Grade completion

•Health

–Regular visits to health centers



As a new approach for social assistance: Conditional Cash Transfer Program in Turkey

How does CCT Targeting Mechanism Work?

APPLICATION

(filling the application form and entering to computer program)

INQUIRY FROM 10 DATABASES

(via internet, automatically)

SCORING THE FORMS BY THE FORMULA

FIELD RESEARCH

(by the social workers)

BOARD OF TRUSTY

**BENEFICIARY
&
NOT
BENEFICIARY**



As a new approach for social assistance: Conditional Cash Transfer Program in Turkey

1.How does application process work in CCT program?

All the candidates must apply to the program by themselves in their locals, fill the application form with 38 questions and have to show their formal identity cards with their identity numbers on it.

The application forms and all other information are then entered to the computer program by the local social workers.

2.How does inquiry from 10 databases work in CCT program?

When the applicant's formal ID number has been to the program it automatically investigates the person's all the information from the 10 governmental databases via net such as address, asset (car, house), social insurance, job status, salary...etc.

3.How does scoring formula process work in CCT program?

Scoring formula has a cut-off point identified by some scientific researches. It automatically gives points to the answers of the applicant form and calculates the final score.



As a new approach for social assistance: Conditional Cash Transfer Program in Turkey

4. How does field research process work in CCT program?

It is a kind of a data verification process for the application form. Its main aim is to integrate the information given by the applicant with the real situation of the applicant to make a complete investigation about the applicants. It secondly investigates whether the applicant filled the form correctly or not.

5. How does Board of Trusty work in CCT program?

When all the investigations have been made, the computer program makes a decision about the applicant. But since it is impossible even to make a definition for poor, it is unlogical to ignore the locals' opinions about the situation. Having lead by the local governor, a board of trusty including the non governmental people makes a final decision based on the computer's decision.



As a new approach for social assistance: Conditional Cash Transfer Program in Turkey

Amounts Paid For Beneficiaries

•Education Support

Male Primary School Student	~16 USD./month
Female Primary School Student	~ 20 USD./month
Male Secondary School Student	~ 25USD./month
Female Secondary School Student	~ 30USD./month

•Health Support

Children aged between 0-6:	~ 16 USD./month
----------------------------	-----------------



Some Statistical FACTS about Social Assistance Programs implemented by Department of Social Assistance

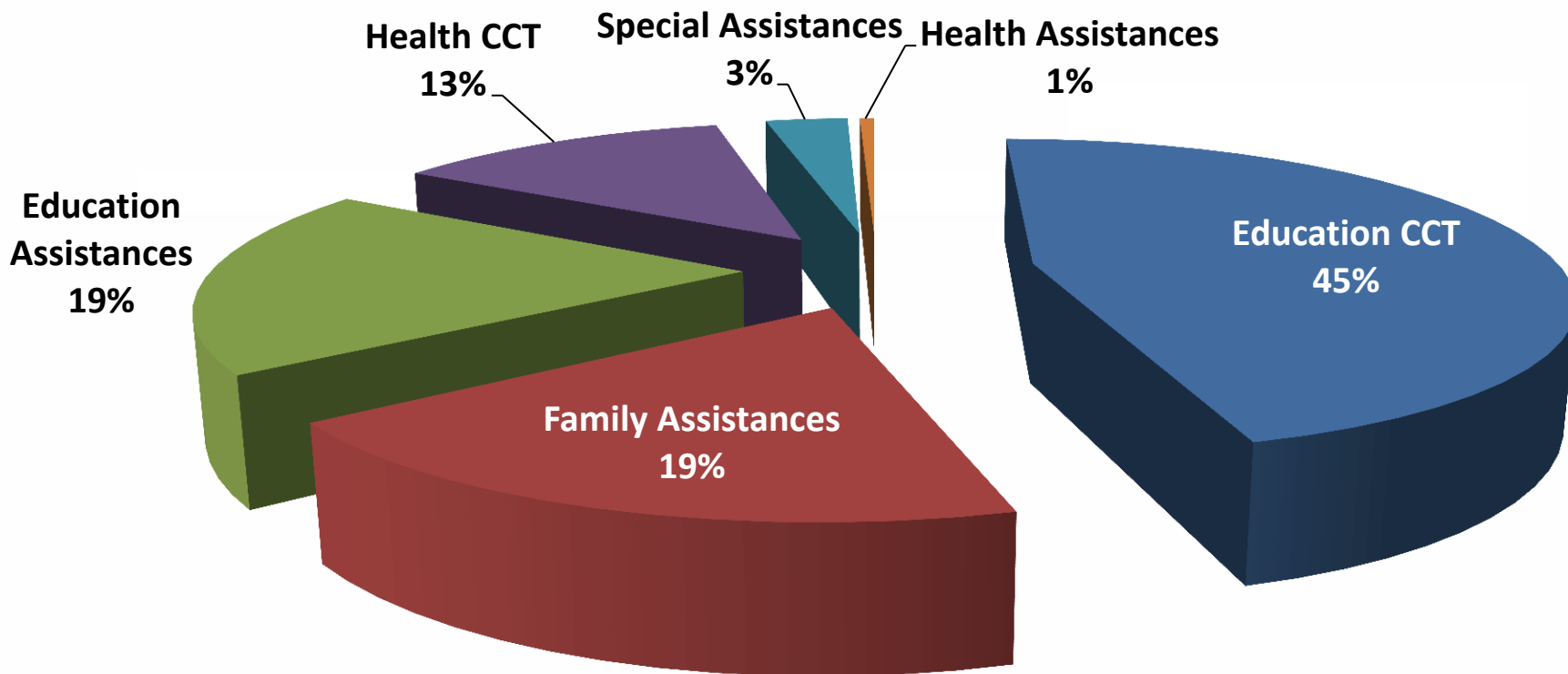
Amount of resources transferred for Social Assistance Programs implemented by Department of Social Assistance

	TL	USD (\$)	Percentage within all resources allocated by GDSA %
Education CCT	267.112.689,62	143.608.972,91	13,19
Family Assistances	113.557.282,80	61.052.302,58	5,61
Education Assistances	111.304.705,98	59.841.239,77	5,49
Health CCT	73.731.145,01	39.640.400,54	3,64
Special Assistances	18.222.045,02	9.796.798,40	0,90
Health Assistances	3.332.499,53	1,785,905.42	0,16
TOTAL	587.260.367,96	313.939.714,21	28,99



Some Statistical FACTS about Social Assistance Programs implemented by Department of Social Assistance

Percentage Distribution of transferred resources by Department of Social Assistance (*within the department*)





THANK YOU...

For further information:

cesenyel@sydgm.gov.tr

www.aile.gov.tr

www.sydgm.gov.tr